

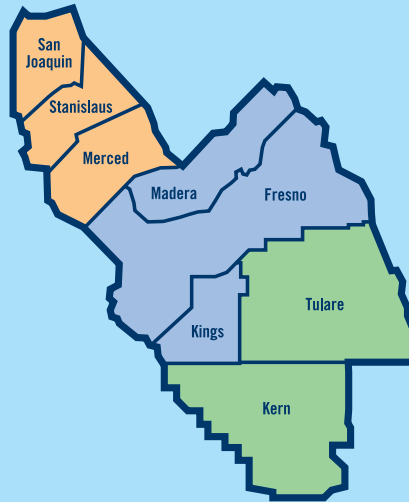


## AIR QUALITY IN THE SAN JOAQUIN VALLEY

Despite years of improvements, the San Joaquin Valley air basin fails to meet state and federal health-based air-quality standards. To protect the public health, the Valley Air District has adopted stringent control measures. Incentive programs, such as the Clean Green Yard Machines lawn mower trade-in and the Burn Cleaner woodstove change-out program, help the public make air-friendly product purchases. The District also conducts outreach programs like Healthy Air Living and Check Before You Burn to educate residents about air-quality issues.



For more information about air-friendly yard care and the District's lawn mower trade-in program, visit [www.valleyair.org](http://www.valleyair.org). Or call the nearest District office.



### Northern Region

*Serving San Joaquin, Stanislaus and Merced counties*  
4800 Enterprise Way, Modesto, CA 95356-9322  
Tel: 209-557-6400 FAX: 209-557-6475

### Central Region (Main Office)

*Serving Madera, Fresno and Kings counties*  
1990 E. Gettysburg Avenue, Fresno, CA 93726-0244  
Tel: 559-230-6000 FAX: 559-230-6061

### Southern Region

*Serving Tulare and Valley air basin portions of Kern counties*  
34946 Flyover Court, Bakersfield, CA 93308  
Tel: 661-392-5500 FAX: 661-392-5585

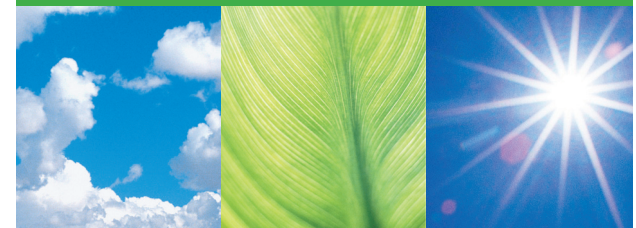


**San Joaquin Valley**  
AIR POLLUTION CONTROL DISTRICT

Please visit our web site at [www.valleyair.org](http://www.valleyair.org)

# CLEAN-AIR YARD CARE

## Pollution-reducing tips for lawn and garden care



**San Joaquin Valley**  
AIR POLLUTION CONTROL DISTRICT

1-800 SMOG INFO  
[www.valleyair.org](http://www.valleyair.org)

# A gas-powered lawn mower produces as much pollution in an hour as 40 late-model cars.

## Lawn Equipment and Air Quality

You may not associate small engines used in lawn and garden care with air pollution. However, gas-powered lawn mowers, leaf blowers, trimmers, chain saws and other garden equipment emit smog-forming chemicals and particles that are harmful to human health. You can help improve our Valley's air quality by practicing clean-air yard care.

A gas-powered lawn mower pollutes as much in an hour as 40 late-model cars, and a gas-powered leaf blower can emit 80 times the pollution of a car over a one-year period.

Leaf blowers contribute to regional air-quality problems by generating smog-forming chemicals from fuel evaporation and combustion. Also, dust and other particles kicked up by a leaf

blower can reach concentrations that are unhealthy for the user and any bystanders. Leaf blowers have long been a source of complaints because of another type of pollution – noise. Many communities now prohibit their use due to the high levels of noise they produce.

The lawn care equipment you use makes a difference in the air you breathe. When you buy new tools, look for electric or manual lawn mowers, blowers, trimmers and chain saws instead of gas-powered.



## Alternatives for Clean Yard Care

For every gasoline-burning yard care tool, an electric or manual option is available that usually works just as well and pollutes much less – or not at all! Instead of selling or giving away old gas-burning yard equipment so it continues to produce pollution by someone else, take it to a recycling center where the metal can be reused in other products.

Using manual tools for lawn and garden care is particularly handy for small yards. A rake or broom can work just as well as a blower and produces much less dust.

Choosing a low-maintenance landscape can save time and water, creating less pollution. Use slower-growing grasses or ground covers that require little or no mowing, or plant trees and native plants in place of grass. Properly placed trees also help cool your home, reducing both energy costs and air pollution.



## Clean Green Yard Machines

The Valley Air District helps Valley residents reduce yard care air pollution by offering them a discount to purchase non-polluting electric mowers. Their gas-powered mowers are retired and turned into scrap metal to be used in other products.



## Pollution-Reducing Tips

If you do choose to use gas-powered lawn equipment, preventing spills is one of the simplest and most effective ways to reduce emissions. Even small gas spills evaporate and release smog-forming emissions into the air. Here are some tips to prevent gas spills:

- Use a gasoline container you can hold easily and securely.
- Use caution when pumping gas into the container.
- Use a funnel or an automatic stop device to prevent overfilling.
- Keep the cap or spout and any vent holes closed tightly.

Properly maintaining any engine is important for it to run as cleanly as possible. Follow the manufacturer's guidelines for maintenance, including:

- Change the oil and clean or replace the air filters regularly.
- Use the proper fuel/oil mixture in two-stroke equipment.
- Get periodic tune-ups for all gasoline-powered equipment.
- Maintain sharp mower blades and keep the underside of the mower deck clean.

