

CHECK BEFORE YOU BURN

Wood burning is a serious health matter. During winter, smoke from residential wood burning – whether it's in a fireplace, wood stove, pellet stove, wood-burning insert or outdoor chimineas and fire pits – puts dangerous emissions into the air.

Each winter, from November 1 through the end of February, the District issues a daily residential wood-burning status.

There are three levels:



No one can burn at their residence.



In order to legally burn on days that this status is declared, you MUST register your device. Look inside this brochure for details.



If you must burn, please ensure your firewood is clean, seasoned and dry. Unseasoned wood smolders and creates additional emissions, and may result in a fine.

Check Before You Burn applies to any indoor or outdoor device which burns solid fuel, such as wood, wood pellets or manufactured wood logs. This includes open hearth fireplaces, stoves and inserts, pellet stoves, and outdoor chimineas and fire pits.

You can find the wood-burning status several ways:

- Call 1-800-SMOG INFO (766-4463)
- Visit www.valleyair.org/CBYB
- Through the free "Valley Air" app 

It is YOUR responsibility to find out if you can burn on any given day. If you burn when it is prohibited, you will face fines and penalties.

Burn Cleaner

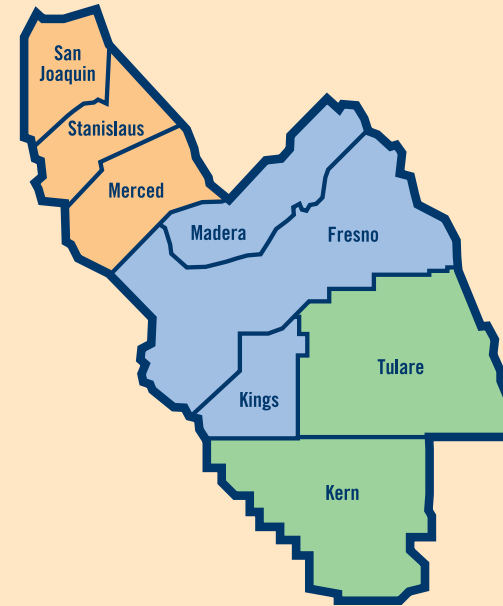
Valley residents that choose to switch to a natural gas or propane-fueled insert can get significant savings!

Find out how much you can qualify for at www.valleyair.org/burncleaner.



If you purchase a new wood or pellet burning device you have 12 months to use our simple online registration. After 12 months you will have to have an RWBHP inspection in order to get registered. See registration details inside this brochure.

For more information:



Northern Region

Serving San Joaquin, Stanislaus and Merced counties
4800 Enterprise Way, Modesto, CA 95356-8718
Tel: 209-557-6400 FAX: 209-557-6475
Complaint Line: 1-800-281-7003

Central Region (Main Office)

Serving Madera, Fresno and Kings counties
1990 E. Gettysburg Avenue, Fresno, CA 93726-0244
Tel: 559-230-6000 FAX: 559-230-6061
Complaint Line: 1-800-870-1037

Southern Region

Serving Tulare and the Valley air basin portion of Kern counties
34946 Flyover Court, Bakersfield, CA 93308-9725
Tel: 661-392-5500 FAX: 661-392-5585
Complaint Line: 1-800-926-5550

www.valleyair.org & www.healthyairliving.com



Follow us on social media, search "ValleyAir"



REGISTER YOUR WOOD BURNING DEVICE



San Joaquin Valley
AIR POLLUTION CONTROL DISTRICT

1-800 SMOG INFO
www.valleyair.org/CBYBregistration

Registering Your Wood Burning Device

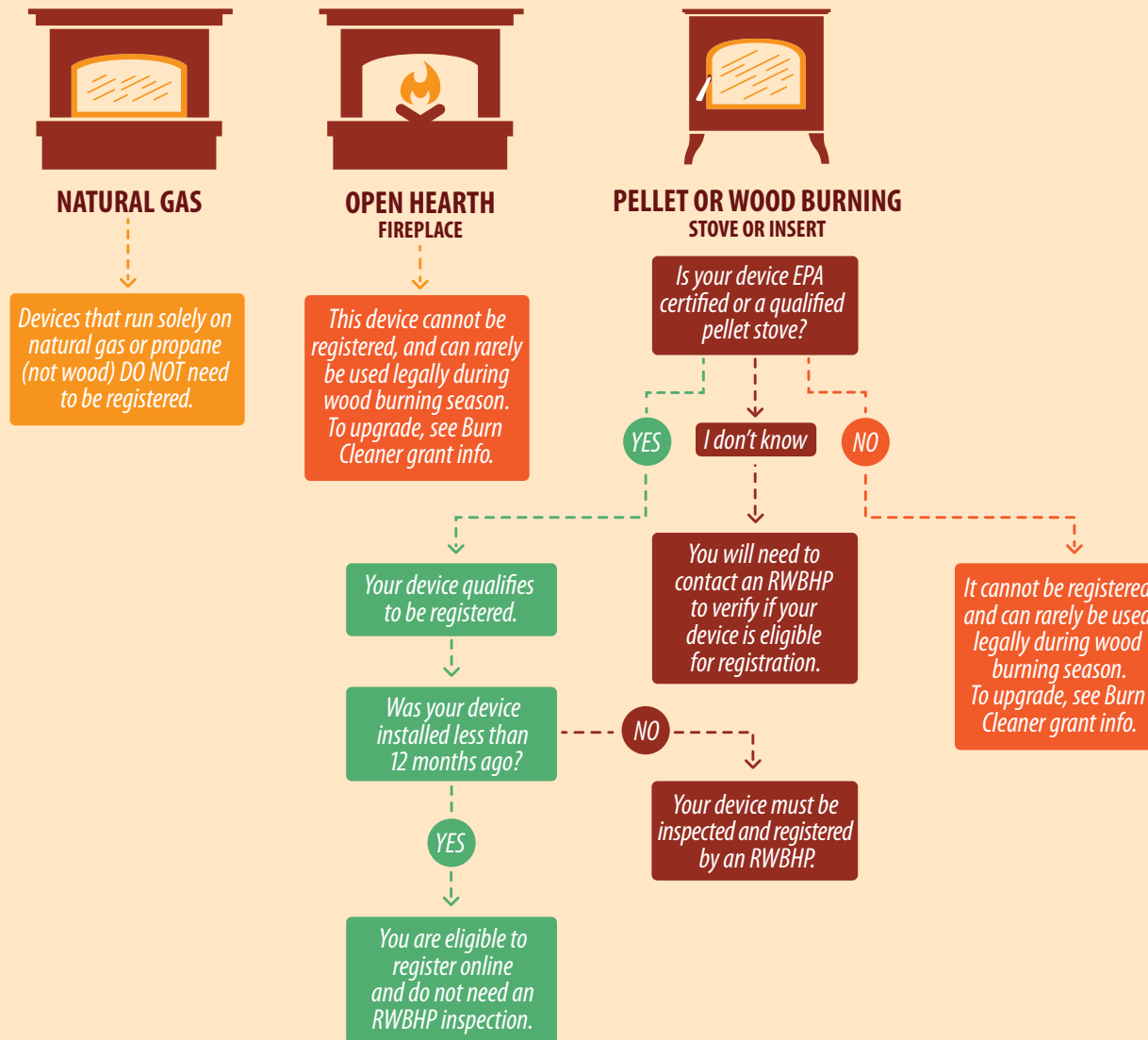
In order to use your clean certified wood or pellet burning device on days when the wood-burning status is "No Burning Unless Registered" you must register your device.

- » If the EPA certified device was installed more than 12 months ago, it will need to be inspected and registered by a Registered Wood Burning Heater Professional (RWBHP). To get the list of RWBHPs, visit www.valleyair.org/CBYBregistration and answer a few questions to determine your registration option.
- » If the EPA certified device was installed less than 12 months ago, make sure you indicate that when you register at www.valleyair.org/CBYBregistration. This will allow you to register without hiring an RWBHP.

PLEASE NOTE: Residences with no access to piped-in natural gas (even if you use propane) are not required to register their device and there are no restrictions on when you can burn for heating in your home. However, burning in an outdoor wood burning device is subject to wood burning curtailments.

Registration is voluntary. If you choose to significantly restrict the use of your device and only burn when the District declares "Burning Discouraged," then registration is not necessary.

How do I Know if I Should Register my Device?



Additional Things to Know

For full registration of your device it must be:

- » Located in the San Joaquin Valley air basin
- » An EPA certified wood burning device or EPA exempt pellet stove
- » Inspected by an independent, District-registered Wood Burning Heater Professional (RWBHP) every three years

Each registration carries a nominal fee from the District in addition to any charges you pay to the RWBHP for inspection services.

The RWBHP will inspect and verify that your device:

- » Qualifies to be registered
- » Is in good working condition
- » Is clean and maintained according to manufacturer recommendations

Before having your device inspected, please note these important details:

- » RWBHPs are independent contractors and not employees of the Valley Air District
- » Shop around and compare prices
- » Work quality may vary so check references
- » Follow manufacturer maintenance recommendations
- » Review device installation warranty if applicable