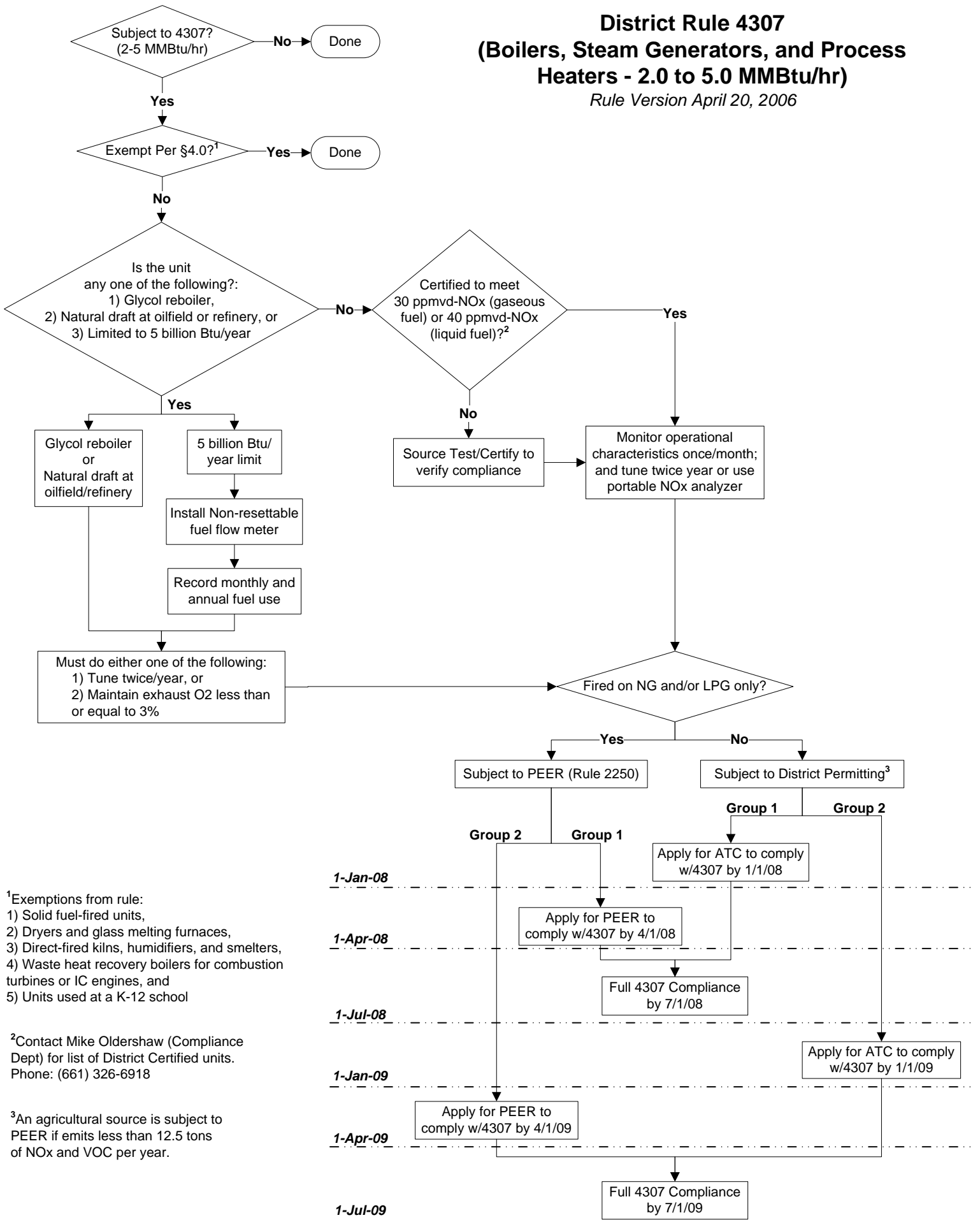


District Rule 4307 (Boilers, Steam Generators, and Process Heaters - 2.0 to 5.0 MMBtu/hr) Rule Version April 20, 2006



¹Exemptions from rule:
1) Solid fuel-fired units,
2) Dryers and glass melting furnaces,
3) Direct-fired kilns, humidifiers, and smelters,
4) Waste heat recovery boilers for combustion turbines or IC engines, and
5) Units used at a K-12 school

²Contact Mike Oldershaw (Compliance Dept) for list of District Certified units.
Phone: (661) 326-6918

³An agricultural source is subject to PEER if emits less than 12.5 tons of NOx and VOC per year.