

IdleAire Technologies Corporation

Air Quality Symposium San Joaquin Valley Air Pollution Control District

Bakersfield, CA
September 30, 2004

Tom Badgett, Chief Information Officer



Who is IdleAire?

- Advanced Truckstop Electrification Shorepower
- 21 Commercial Locations & Growing
- ~2,200,000 Hours of Service Provided
- 90,000 Members/Users



IdleAire Standard Services

- 110\208 VAC Shore Power (3-Phase Bus)
- Heating and Air Conditioning
- Filtered Air
- In-Cab Computer With Touch Screen
- Internet Access With Email
- Satellite TV (20 Channels)
- Telephone Connection

IdleAire Optional Services

- Additional TV Channels
- Movies On Demand (LodgeNet[®])
- In-Cab Training (Interactive Video)
- Discount Long Distance Calling
- Ethernet & WiFi Internet connections

The ATE Concept

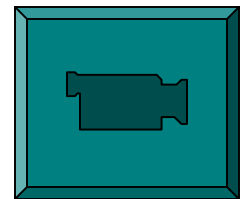


Atlanta ATE

Overhead Services Delivery

2.2 Million Hours Used
2,200,000 Gallons Saved
~26,000 Tons Emissions
Removed

Remote Controlled Power
110 VAC ShorePower
208VAC 3-phase Bus
Telephone
Computer
Internet & Email
Video on Demand



ShorePower Service Module (Front)

Night Light

Lighted On/Off Button for the screen, so you can find it easily in the dark

Card Reader

Slide your member Card and follow instructions

Built-In Touch Screen Computer

Control your "Home-On-The-Road" and surf the Internet

Help

Available 24x7. On-Screen Context-Sensitive Help or dial 611 from your cab phone or 800-738-7024 from any phone

110V Electric Outlets

Inside and Outside your cab for appliances, block/fuel heaters and other accessories

Internet

High-Speed Ethernet Port for Internet on your Computer - Wireless Internet also available

Central Heat & Air

Thermostat controlled filtered air flow, recycled from your cab



Go Buttons

One-Touch Access to Main Functions

USB Ports

Use a keyboard, mouse or other USB devices

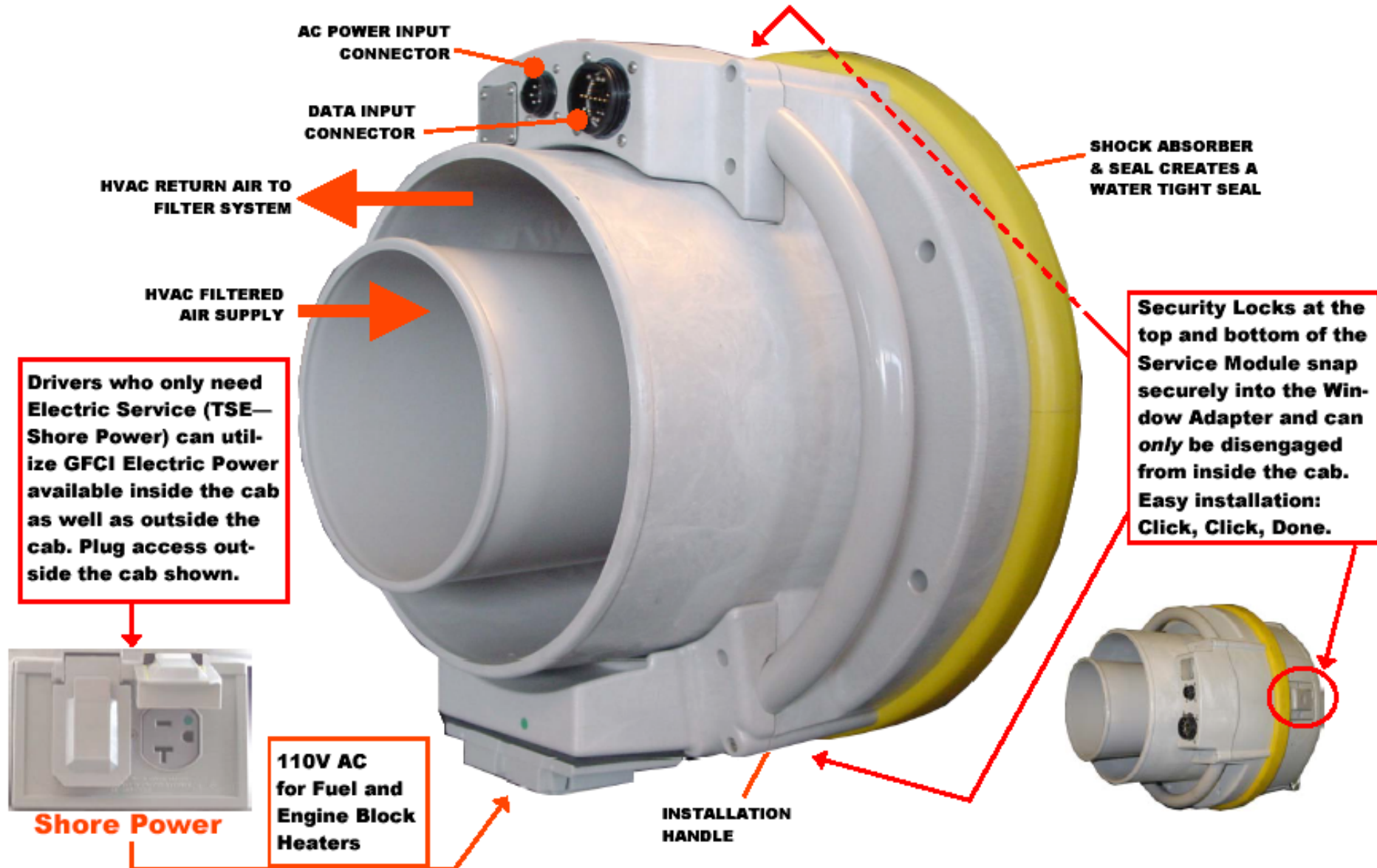
Telephone

Plug in a regular phone for incoming and outgoing calls

Television

Connect your TV with standard COAX cable for Premium Satellite TV

ShorePower Service Module (Rear)



ATE Provides High Quality Air

- Sealed System (Purged After Every Visit)
- Full Air Exchange Every Minute
- Activated Carbon Filter
- Cleaned/Deodorized After Every Visit
- Periodic Maintenance Schedule

Variety of Vehicles

Recreational Vehicles



Medium Duty and Straight Trucks



Emergency and Service Vehicles



Non-Commercial or Commercial Vans



Fed Ex Express Delivery



ATE

Proven Occupancy & Usage

- 90,000 trained driver/members
- 70+% Repeat Users
- 2.2 Million Hours of Use
- 2.2 Million Gallons Diesel Saved
- 25,809 Tons Emissions Eliminated
 - NO_x -- 329 Tons
 - PM -- 6.6 Tons
 - VOC -- 16.5 Tons
 - CO -- 136.6 Tons
 - CO₂ -- 25,321 Tons

Drivers Seek IdleAire

Driver Sign Up Board

Date	Company	Truck #	Time Requested
7/3	ARCTIC	2074	8:33 P
"	9th Street	12068	8:37 P
"	TYSON	59001	8:41 P
"	Admiral	94993	8:47 P
"	BRANT	5365	8:51 P
"	EMPIRE	10204	8:53 P
"	PLAYFLOWER	590-21	8:58 P
"	R+R Trucking	6011	9:02 P
"	Equipment Express	351	9:06 P
"	PTL	8535	9:15 P

IdleAire WAIT LIST

Fleet Acceptance

- 521 Contracted Fleets
- 117,557 Trucks
- 27 of Nation's Top 100 Fleets
- IdleAire a Recruitment Tool
- IdleAire a Driver Retention Tool

Travel Center Acceptance

- National Contracts Petro, Pilot, T/A
- 80% of National Chains
- 48% of Total Travel Center Market
- 21 Travel Center Locations Today
- 2005 Aggressive Build Out
- Parsons Brinckerhoff Agreement

Direct Driver Benefits

Sleep Study Results

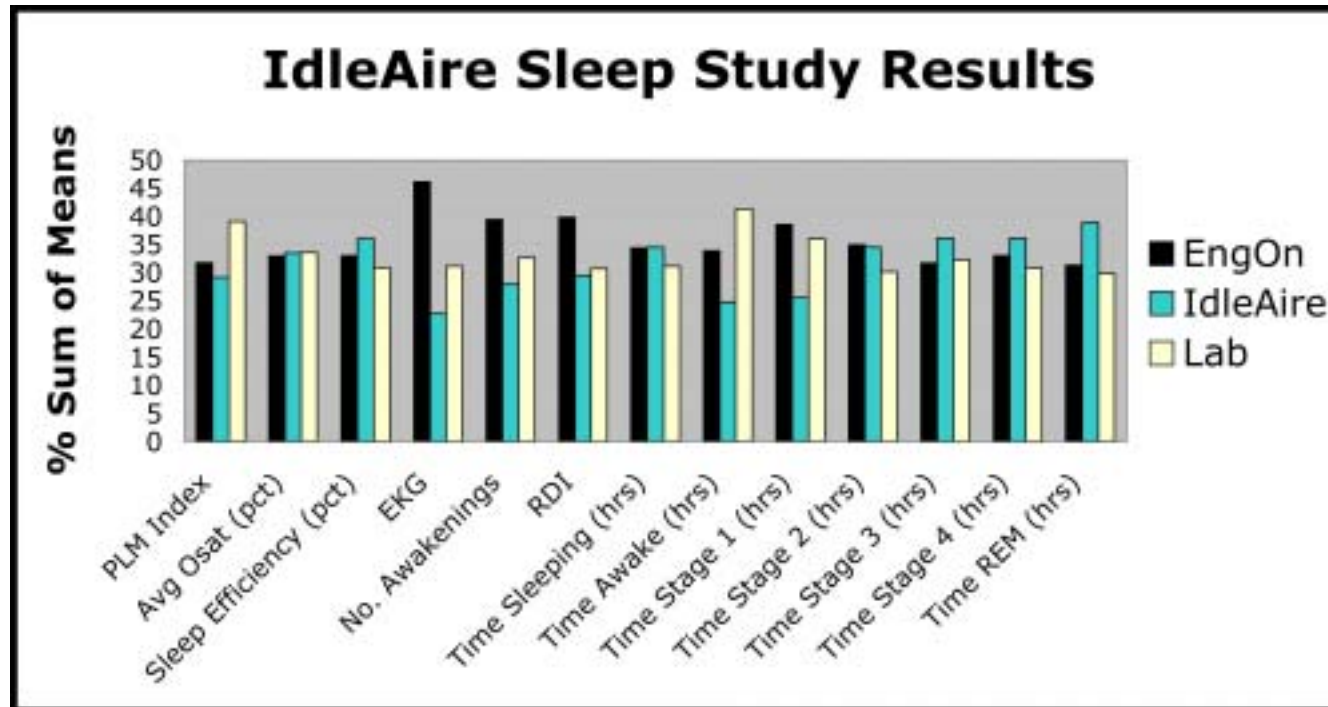
- 25 Drivers Studied -- 3 Locations
- 13 Sleep Quality Criteria
- Sleep Apnea Problems
- Oxygen Saturation Low
- Overall Sleep Quality Better With IdleAire

Dr. Sam Kabbani, C.M.D.
East Tennessee Neurology Clinic



Direct Driver Benefits

Sleep Study Benefits



Direct Driver Benefits

Air Quality Study Results

- 20 Randomly Selected Trucks
- Study of PM₁₀ Levels
- 82% Better Air Quality With IdleAire
- 53% Better Than Outside Air

Dr. Wayne Davis
Assoc. Dean Research & Technology
College of Engineering
University of Tennessee, Knoxville



San Joaquin Truck Stops

Sites	32
Spaces	4,360
Potential Emissions Reduction	218,863 Tons/Year



San Joaquin IdleAire Truckstops

Location	Hours	Emissions ¹	Fuel ²
Bruce's Bakersfield	167,358	1,713	167,358
Loves Ripon	245,002	2,507	245,002
Loves Lost Hills	76,792	786	76,792
Pilot Madera	27,748	285	27,748
Petro Los Banos	181,319	1,856	181,319
Rotten Robbie Santa Nella	21,315	219	21,315
TOTALS:	719,534	7,363	719,534

1 = Tons

2 = Gallons



IdleAire Contracted Sites

Location	Potential Spaces	Emissions¹ (Tons)	Fuel² (Gallons)
Petro Wheeler Ridge*	415	17,921	1,817,700
TA Wheeler Ridge*	165	7,125	722,700
Pilot #139 Santa Nella	75	3,239	328,500
Pilot #154 Lost Hills	75	3,239	328,500
TA Santa Nella	216	9,327	946,080
TA Buttonwillow	220	9,500	963,600
TA Lost Hills	65	2,807	284,700
TOTALS:	1,231	53,158	5,391,780

* = Engineering/Permitting Underway

Assumptions

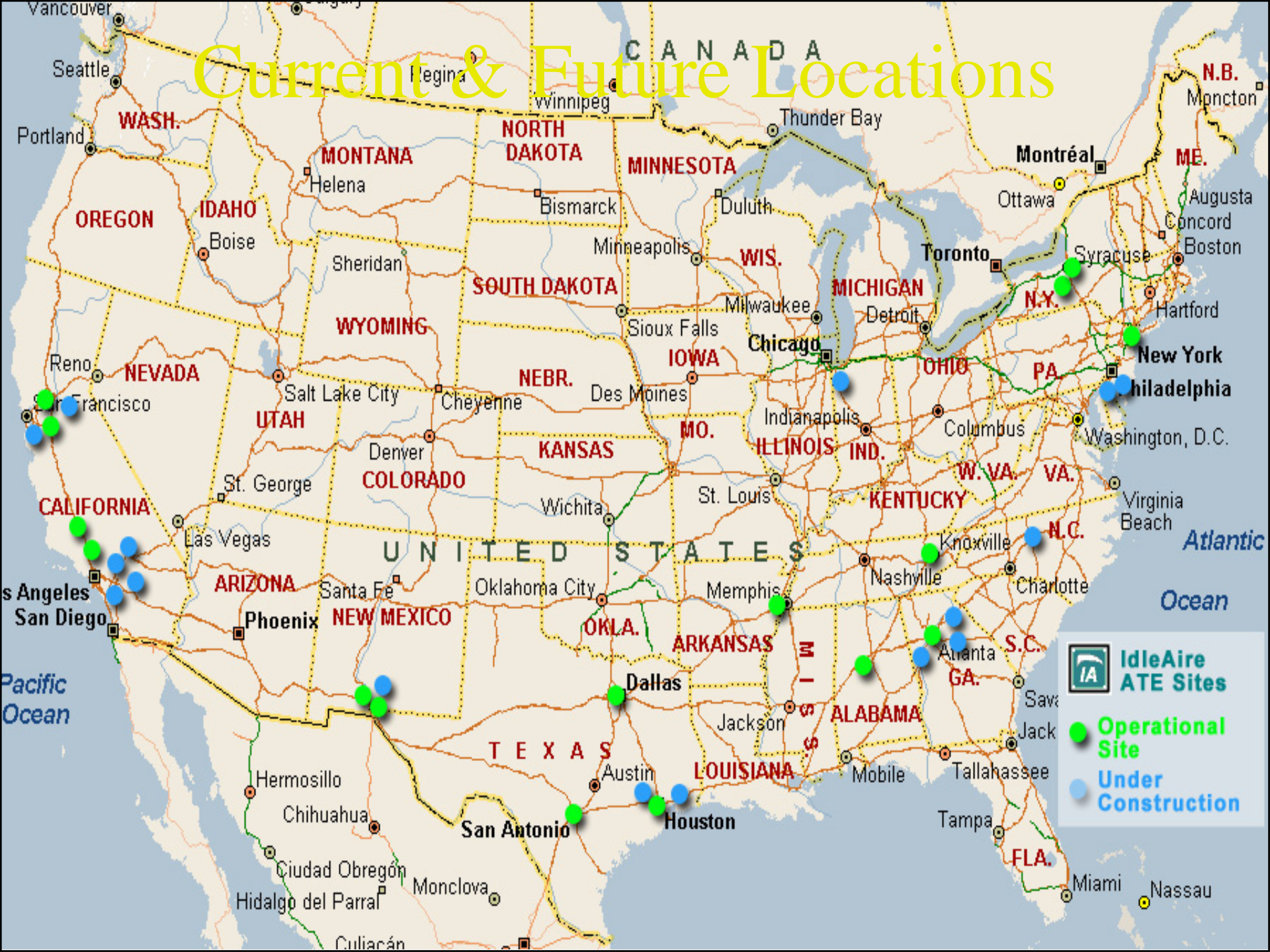
1 = Annual @ 12 Hours/Day
 2 = Annual @ 1 Gallon/Hour



Other San Joaquin Sites

Potential Spaces	Emissions Savings (Tons/Year)	Fuel Savings (Gallons/Year)
2,377	102,644	10,411,260

Current & Future Locations



The logo features a teal-colored stylized graphic of a truck's front end, including the hood and grille, positioned above the company name. The word "Idle" is in white, and "Aire" is in teal. Below this, "Technologies Corporation" is written in white.

IdleAire
Technologies
Corporation

Truck Stop Electrification for the 21st Century

410 Cedar Bluff Road
Suite 200
Knoxville, TN 37923

Tele: 865-342-3600
Fax: 865-342-3650
www.idleaire.com