



San Joaquin Valley

AIR POLLUTION CONTROL DISTRICT



HEALTHY AIR LIVING™

DEC 16 2013

Ms Jennifer Hart
Vintage Production California LLC
9600 Ming Avenue, Suite 300
Bakersfield, CA 93311

Re Proposed ATC / Certificate of Conformity (Significant Mod)
District Facility # S-1326
Project # 1134319

Dear Ms Hart

Enclosed for your review is the District's analysis of an application for Authority to Construct for the facility identified above. You requested that a Certificate of Conformity with the procedural requirements of 40 CFR Part 70 be issued with this project. The project authorizes a 15 MMBtu/hr natural gas-fired heater treater resulting in an emissions increase of 1,445 lb-NOx/year and 723 lb-VOC/year.

After addressing all comments made during the 30-day public notice and the 45-day EPA comment periods, the District intends to issue the Authority to Construct with a Certificate of Conformity. Please submit your comments within the 30-day public comment period, as specified in the enclosed public notice. Prior to operating with modifications authorized by the Authority to Construct, the facility must submit an application to modify the Title V permit as an administrative amendment, in accordance with District Rule 2520, Section 11.5.

If you have any questions, please contact Mr. Leonard Scandura, Permit Services Manager, at (661) 392-5500.

Thank you for your cooperation in this matter.

Sincerely,

David Warner
Director of Permit Services

DW RE/st

Enclosures

cc Mike Tollstrup, CARB (w/enclosure) via email
cc Gerardo C. Rios, EPA (w/enclosure) via email

Seyed Sadredin
Executive Director/Air Pollution Control Officer

Northern Region
4800 Enterprise Way
Modesto CA 95356 8718
Tel (209) 557 6400 FAX (209) 557 6475

Central Region (Main Office)
1990 E Gettysburg Avenue
Fresno CA 93726 0244
Tel (559) 230 6000 FAX (559) 230 6061

Southern Region
34946 Flyover Court
Bakersfield CA 93308 9725
Tel 661 392 5500 FAX 661 392 5585

San Joaquin Valley Air Pollution Control District Authority to Construct

15 MMBtu/hr Heater Treater

Facility Name	Vintage Production California, LLC	Date	December 10, 2013
Mailing Address	9600 Ming Ave , Suite 300 Bakersfield, CA 93311	Engineer	Richard Edgehill
		Lead Engineer	Steve Leonard
Contact Person	Jennifer Hart		
Telephone	(661) 869-8065		
Fax	(661) 869-8059		
Application #(s)	S-1326-437-0		
Project #	S-1134319		
Deemed Complete	November 15, 2013		

I PROPOSAL

Vintage Production California (VPC) requests an Authority to Construct (ATC) for a 15 MMBtu/hr natural gas-fired heater treater. The project results in an increase in combustion emissions of NO_x, SO_x, PM₁₀, CO, and VOC.

The project is a Federal Major Modification. BACT, offsets, and public notice are required.

VPC facility S-1326 has a Title V permit. The project is a Federal Major Modification, therefore, it is classified as a Title V Significant Modification pursuant to Rule 2520, Section 3.20, and can be processed with a Certificate of Conformity (COC). Since the facility has specifically requested that this project be processed in that manner, the 45-day EPA comment period will be satisfied prior to the issuance of the Authority to Construct. VPC must apply to administratively amend their Title V Operating Permit to include the requirements of the ATC(s) issued with this project.

II APPLICABLE RULES

District Rule 2201	New and Modified Stationary Source Review Rule (4/21/11)
District Rule 2410	Prevention of Significant Deterioration (June 16, 2011)
District Rule 2520	Federally Mandated Operating Permits (6/21/01)
District Rule 4001	New Source Performance Standards (4/14/99)
District Rule 4101	Visible Emissions (2/17/05)
District Rule 4102	Nuisance (12/17/92)
District Rule 4201	Particulate Matter Concentration (12/17/92)
District Rule 4301	Fuel Burning Equipment (12/17/92)
District Rule 4305	Boilers, Steam Generators and Process Heaters – Phase 2 (8/21/03)
District Rule 4306	Boilers, Steam Generators and Process Heaters – Phase 3 (10/16/08)
District Rule 4320	Advanced Emission Reduction Options for Boilers, Steam Generators, and Process Heaters Greater than 5.0 MMBtu/hr (10/16/08)

District Rule 4351 Boilers Steam Generators and Process Heaters – Phase 1 (8/21/03)
District Rule 4801 Sulfur Compounds (12/17/92)
CH&SC 41700 Health Risk Assessment
CH&SC 42301 6 School Notice
Public Resources Code 21000-21177 California Environmental Quality Act (CEQA)
California Code of Regulations, Title 14, Division 6, Chapter 3, Sections 15000-15387 CEQA
Guidelines

III PROJECT LOCATION

The heater treater will be located within VPC's heavy oil central stationary source, SW/4 Section 4, T27S, R28E. The equipment is not located within 1,000 feet of the outer boundary of a K-12 school. Therefore, the public notification requirement of California Health and Safety Code 42301 6 is not applicable to this project.

A project location map, plot plan, and facility photo is included in **Attachment I**.

IV PROCESS DESCRIPTION

The new heater treater will be used to reduce viscosity, thereby improving fluid flow characteristics of heavy crude oil at the Mt Poso facility.

In order to comply with District Rule 4320 NO_x requirements, the applicant is proposing emissions limits of 9 ppmv NO_x @ 3% O₂ and 50 ppmv @3% O₂ CO. The unit is equipped with separate burners, gas trains, controls and stacks for two 7.5 MMBtu/hr burners. Natural gas with a sulfur content not exceeding 1.0 gr S/100 scf is proposed as fuel.

V EQUIPMENT LISTING

S-1326-437-0 15 MMBTU/HR NATURAL GAS-FIRED HEATER TREATER WITH TWO SEPARATE 7.5 MMBTU/HR MAXON XPO 5 EB ULTRA LOW NOX BURNERS (OR EQUIVALENT)

VI EMISSION CONTROL TECHNOLOGY EVALUATION

Low-NO_x burners reduce NO_x formation by producing lower flame temperatures (and longer flames) than conventional burners. Conventional burners thoroughly mix all the fuel and air in a single stage just prior to combustion, whereas low-NO_x burners delay the mixing of fuel and air by introducing the fuel (or sometimes the air) in multiple stages. Generally, in the first combustion stage, the air-fuel mixture is fuel rich. In a fuel rich environment, all the oxygen will be consumed in reactions with the fuel, leaving no excess oxygen available to react with nitrogen to produce thermal NO_x. In the secondary and tertiary stages, the combustion zone is maintained in a fuel-lean environment. The excess air in these stages helps to reduce the flame temperature so that the reaction between the excess oxygen with nitrogen is minimized.

Sulfur Control

The ATC requires that gas combusted contain no more than 1 gr S/100 scf.

VII. GENERAL CALCULATIONS

A. Assumptions

- The maximum operating schedule is 24 hours per day.
- Unit will be fired on natural gas or a mixture of natural gas and produced gas.
- Natural gas HHV = 1000 Btu/scf
- Natural gas F-Factor = 8578 dscf/MMBtu (corrected at 60 °F)
- Natural gas Sulfur Content = 1 grain per 100scf
- Annual pre-project and post-project potential to emit is calculated based on 8760 hours of operation per year

B. Emission Factors

Post-Project Emission Factors (EF2)

For this unit, post-project emission factors are listed in the table below.

Pollutant	Post-Project Emission Factors (EF2)			Source
NO _x	11 lb-NO _x /MMscf	0.011 lb-NO _x /MMBtu	9 ppmvd NO _x (@ 3%O ₂)	Proposed
SO _x	2.85 lb-SO _x /MMscf	0.00285 lb-SO _x /MMBtu		District Policy APR 1720
PM10	3.0 lb-PM10/MMscf	0.003 lb-PM10/MMBtu		Proposed*
CO	37 lb-CO/MMscf	0.037 lb-CO/MMBtu	50 ppmvd CO (@ 3%O ₂)	Proposed
VOC	5.5 lb-VOC/MMscf	0.0055 lb-VOC/MMBtu	13 ppmvd VOC (@ 3% O ₂)	AP-42 (07/98) Table 1.4-2

*see email dated 7-24-13 (See Attachment II), no manufacturer guarantee is available but PM10 EF is expected with combustion of natural gas with low sulfur.

C. Calculations

1. Pre-Project Potential to Emit (PE1)

Since this is a new emissions unit, PE1 = 0 for all pollutants.

2. Post-Project Potential to Emit (PE2)

The PE2 for each pollutant is calculated with the following equation:

$$\text{PE2} = \text{EF (lb/MMBtu)} \times \text{Heat Input (MMBtu/hr)} \times \text{Op. Sched. (hr/day or hr/year)}$$

Pollutant	Daily PE2			
	EF2 (lb/MMBtu)	Heat Input (MMBtu/hr)	Operating Schedule (hr/day)	Daily PE2 (lb/day)
NO_x*	0.011	15	24	4.0
SO_x	0.00285	15	24	1.0
PM₁₀	0.0030	15	24	1.1
CO	0.037	15	24	13.3
VOC	0.0055	15	24	2.0

Pollutant	Annual PE2			
	EF2 (lb/MMBtu)	Heat Input (MMBtu/hr)	Operating Schedule (hr/year)	Annual PE2 (lb/year)
NO_x	0.011	15	8,760	1,445
SO_x	0.00285	15	8,760	374
PM₁₀	0.0030	15	8,760	394
CO	0.037	15	8,760	4,862
VOC	0.0055	15	8,760	723

Greenhouse Gas Emissions

15 MMBtu/hr x 116.7 lb-CO₂e/MMBtu = 1,751 lb-CO₂e/hour

1,751 lb-CO₂e/hour x 8760 hr/year ÷ 2,000 lb/ton

= 7,669 tons-CO₂e/year >> 230 mtons lb-CO₂e/hour /hr

Emissions Profiles are included in **Attachment II**.

3. Pre-Project Stationary Source Potential to Emit (SSPE1)

SSPE1 calculations are necessary to aid the following determinations:

- If the facility is becoming a new Major Source,
- An offset threshold will be surpassed, or
- A Stationary Source Increase in Permitted Emissions (SSIPE) public notice is triggered

Pursuant to Section 4.9 of District Rule 2201, the Pre-Project Stationary Source Potential to Emit (SSPE1) is the Potential to Emit (PE) from all units with valid Authorities to Construct (ATC) or Permits to Operate (PTO) at the Stationary Source and the quantity of emission reduction credits (ERC) which have been banked since September 19, 1991 for Actual Emissions Reductions that have occurred at the source, and which have not been used on-site.

The SSPE1 can be calculated by adding the PE1 from all units with valid ATCs or PTOs and the sum of the ERCs that have been banked at the source and which have not been used on-site (Total_{ERC})

$$SSPE1_{Total} = SSPE1_{Permit\ Unit} + Total_{ERC}$$

SSPE1 (lb/year)					
Permit Unit/ERC	NO _x	SO _x	PM ₁₀	CO	VOC
SSPE1* Permit Unit	147,133	51,780	51,941	348,451	180,888
ERC S-2310-1					6,201
ERC S-4049-1					3,092
Total _{ERC}					9,293
SSPE1	147,133	51,780	51,941	348,451	190,181

From Project S1326, 1133786

4 Post-Project Stationary Source Potential to Emit (SSPE2)

Pursuant to District Rule 2201, the SSPE2 is the PE from all units with valid ATCs or PTOs at the Stationary Source and the quantity of ERCs which have been banked since September 19, 1991 for AER that have occurred at the source, and which have not been used on-site

SSPE2 (lb/year)					
Permit Unit	NO _x	SO _x	PM ₁₀	CO	VOC
SSPE1	147,133	51,780	51,941	348,451	190,181
S-1326-437-0	1,445	374	394	4,862	723
SSPE2	148,578	52,154	52,335	353,313	190,904

5 Major Source Determination

Rule 2201 Major Source Determination

Pursuant to District Rule 2201, a Major Source is a stationary source with a SSPE2 equal to or exceeding one or more of the following threshold values. For the purposes of determining major source status the following shall not be included:

- any ERCs associated with the stationary source
- Emissions from non-road IC engines (i.e. IC engines at a particular site at the facility for less than 12 months)
- Fugitive emissions, except for the specific source categories specified in 40 CFR 51.165

Rule 2201 Major Source Determination (lb/year)					
	NO _x	SO _x	PM ₁₀	CO	VOC
Facility emissions pre-project	147,133	51,780	51,941	348,451	180,888
Facility emissions – post project	148 578	52 154	52 335	353,313	181,611
Major Source Threshold	20 000	140,000	140,000	200,000	20,000
Major Source?	yes	no	no	yes	yes

As seen in the table above, the facility is an existing Major Source for NO_x, CO, and VOC and is not becoming a Major Source for SO_x and PM₁₀ as a result of this project

Rule 2410 Major Source Determination

The facility or the equipment evaluated under this project is not listed as one of the categories specified in 40 CFR 52.21 (b)(1)(i). Therefore the following PSD Major Source thresholds are applicable

PSD Major Source Determination (tons/year)*							
	NO ₂	VOC	SO ₂	CO	PM	PM ₁₀	CO _{2e}
Estimated Facility PE before Project Increase	74	90	26	174	26	26	>100,000*
PSD Major Source Thresholds	250	250	250	250	250	250	100,000
PSD Major Source ? (Y/N)	N	N	N	N	N	N	Y

*facility has outstanding ATCs for twelve (12) 85 MMBtu/hr SGs and additional combustion equipment

As shown above the facility is an existing major source for PSD for at least one pollutant. Therefore the facility is an existing major source for PSD.

6 Baseline Emissions (BE)

The BE calculation (in lbs/year) is performed pollutant-by-pollutant for each unit within the project to calculate the QNEC, and if applicable, to determine the amount of offsets required.

Pursuant to District Rule 2201, BE = PE1 for

- Any unit located at a non-Major Source,
- Any Highly-Utilized Emissions Unit, located at a Major Source,
- Any Fully-Offset Emissions Unit, located at a Major Source, or
- Any Clean Emissions Unit, located at a Major Source

otherwise,

BE = Historic Actual Emissions (HAE), calculated pursuant to District Rule 2201.

S-1326-428-0:

Since this is a new emissions unit, BE = PE1 = 0 for all pollutants.

7. SB 288 Major Modification

SB 288 Major Modification is defined in 40 CFR Part 51.165 as "any physical change in or change in the method of operation of a major stationary source that would result in a significant net emissions increase of any pollutant subject to regulation under the Act."

Since this facility is not a major source for SO_x or PM₁₀, this project does not constitute an SB 288 major modification for these air contaminants.

Since this facility is a major source for NO_x and VOCs, the project's PE2 is compared to the SB 288 Major Modification Thresholds in the following table in order to determine if the SB 288 Major Modification calculation is required.

SB 288 Major Modification Thresholds			
Pollutant	Project PE2 (lb/year)	Threshold (lb/year)	SB 288 Major Modification Calculation Required?
NO _x	1,445	50,000	No
VOC	723	50,000	No

Since none of the SB 288 Major Modification Thresholds are surpassed with this project, this project does not constitute an SB 288 Major Modification.

8. Federal Major Modification

District Rule 2201 states that a Federal Major Modification is the same as a "Major Modification" as defined in 40 CFR 51.165 and part D of Title I of the CAA.

Since this facility is not a Major Source for SO_x and PM₁₀, this project does not constitute a Federal Major Modification for these air contaminants.

The determination of Federal Major Modification is based on a two-step test. For the first step, only the emission *increases* are counted. Emission decreases may not cancel out the increases for this determination.

Step 1

For new emissions units, the increase in emissions is equal to the PE2 for each new unit included in this project.

The project's combined total emission increases are compared to the Federal Major Modification Thresholds in the following table.

Federal Major Modification Thresholds for Emission Increases			
Pollutant	Total Emissions Increases (lb/yr)	Thresholds (lb/yr)	Federal Major Modification?
NO _x *	1,445	0	Yes
VOC*	723	0	Yes

*If there is any emission increases in NO_x or VOC, this project is a Federal Major Modification and no further analysis is required.

Since there is an increase in NO_x and VOC emissions, this project constitutes a Federal Major Modification, and no further analysis is required.

9. Rule 2410 – Prevention of Significant Deterioration (PSD) Applicability Determination

Rule 2410 applies to pollutants for which the District is in attainment or for unclassified, pollutants. The pollutants addressed in the PSD applicability determination are listed as follows:

- NO₂ (as a primary pollutant)
- SO₂ (as a primary pollutant)
- CO
- PM
- PM₁₀
- Greenhouse gases (GHG): CO₂, N₂O, CH₄, HFCs, PFCs, and SF₆

The first step of this PSD evaluation consists of determining whether the facility is an existing PSD Major Source or not (See Section VII.C.5 of this document).

Since the facility is an existing PSD Major Source, the second step of the PSD evaluation is to determine if the project results in a PSD significant increase.

I. Project Location Relative to Class 1 Area

As demonstrated in the "PSD Major Source Determination" Section above, the facility was determined to be a existing major source for PSD. Because the project is not located within 10 km of a Class 1 area – modeling of the emission increase is not required to determine if the project is subject to the requirements of Rule 2410.

II. Significance of Project Emission Increase Determination

a. Potential to Emit of attainment/unclassified pollutant for New or Modified Emission Units vs PSD Significant Emission Increase Thresholds

As a screening tool, the potential to emit from all new and modified units is compared to the PSD significant emission increase thresholds, and if total

potential to emit from all new and modified units is below this threshold, no further analysis will be needed.

PSD Significant Emission Increase Determination: Potential to Emit (tons/year)						
	NO2	SO2	CO	PM	PM10	CO2e*
Total PE from New and Modified Units	0.7	0.2	2.4	0.2	0.2	7,669
PSD Significant Emission Increase Thresholds	40	40	100	25	15	75,000
PSD Significant Emission Increase?	N	N	N	N	N	N

*15 MMBtu/hr x 116.7 lb-CO2e/MMBtu = 1,751 lb-CO2e/hour

1,751 lb-CO2e/hour x 8760 hr/year ÷ 2,000 lb/ton = 7,669 tons-CO2e/year

As demonstrated above, because the project has a total potential to emit from all new and modified emission units below the PSD significant emission increase thresholds, this project is not subject to the requirements of Rule 2410 due to a significant emission increase and no further discussion is required.

10. Quarterly Net Emissions Change (QNEC)

The QNEC will be calculated for each pollutant, for each unit, as the difference between the quarterly PE2 and the quarterly PE1. The QNEC for each pollutant is shown in the table(s) below:

QNEC			
Pollutant	PE2 (lb/yr)	PE1 (lb/yr)	QNEC (lb/qtr)
NO _x	1,445	0	361
SO _x	374	0	94
PM10	394	0	99
CO	4862	0	1216
VOC	723	0	181

VIII COMPLIANCE

District Rule 2201 New and Modified Stationary Source Review Rule

A Best Available Control Technology (BACT)

1 BACT Applicability

BACT requirements are triggered on a pollutant-by-pollutant basis and on an emissions unit-by-emissions unit basis. Unless specifically exempted by Rule 2201, BACT shall be required for the following actions*

- a Any new emissions unit with a potential to emit exceeding two pounds per day,
- b The relocation from one Stationary Source to another of an existing emissions unit with a potential to emit exceeding two pounds per day,
- c Modifications to an existing emissions unit with a valid Permit to Operate resulting in an APE exceeding two pounds per day, and/or
- d Any new or modified emissions unit, in a stationary source project, which results in an SB 288 Major Modification or a Federal Major Modification, as defined by the rule

*Except for CO emissions from a new or modified emissions unit at a Stationary Source with an SSPE2 of less than 200,000 pounds per year of CO

a New emissions units – PE > 2 lb/day

As seen in Section VII C 2 above, the applicant is proposing to install a new heater treater with two separate 7.5 MMBtu/hr burners (emissions units). Emissions from each burner are listed in the table below.

PE2	
	Daily Emissions (lb/day)
NO _x	2.0
SO _x	0.5
PM ₁₀	0.5
CO	6.7
VOC	1.0

The PE is greater than 2 lb/day for CO only, therefore, BACT is triggered as the SSPE2 for CO is greater than 200,000 lbs/year, as demonstrated in Section VII C 5 above.

b Relocation of emissions units – PE > 2 lb/day

As discussed in Section I above, there are no emissions units being relocated from one stationary source to another, therefore BACT is not triggered.

c Modification of emissions units – AIPE > 2 lb/day

As discussed in Section I above, there are no modified emissions units associated with this project. Therefore BACT is not triggered.

d SB 288/Federal Major Modification

As discussed in Sections VII C 7 and VII C 8 above, this project does constitute a Federal Major Modification for NO_x and VOC emissions. Therefore, BACT is triggered for any pollutant with an emissions increase > 0.5 lb/day (NO_x and VOC).

2 BACT Guideline

Please note that BACT Guidelines 1.8.4 Heater Treater < 20 MMBtu/hr, natural gas-fired and 1.8.5 [Process Heater (non-refinery, < or = 20 MMBtu/hr)] have been rescinded and replaced by District Rule 4320 for NO_x. BACT Guidelines 1.8.4 and 1.8.5 apply to CO and VOC (see **Attachment III**).

3 Top-Down BACT Analysis

Per Permit Services Policies and Procedures for BACT, a Top-Down BACT analysis shall be performed as a part of the application review for each application subject to the BACT requirements pursuant to the District's NSR Rule.

Pursuant to the attached Top-Down BACT Analysis (see **Attachment IV**), BACT has been satisfied with the following:

NO_x 9 ppmvd @ 3% O₂
CO Natural gas
VOC Natural gas

B Offsets

1 Offset Applicability

Offset Determination (lb/year)					
	NO _x	SO _x	PM ₁₀	CO	VOC
Post Project SSPE (SSPE2)	148,578	52,154	52,335	353,313	190,904
Offset Threshold	20,000	54,750	29,200	200,000	20,000
Offsets triggered?	Yes	No	Yes	Yes	Yes

2 Quantity of Offsets Required

As seen above, the SSPE2 is greater than the offset thresholds for NO_x, PM₁₀, CO, and VOC. Therefore, offset calculations will be required for this project.

The quantity of offsets in pounds per year for NOX, PM10, CO, and VOC is calculated as follows for sources with an SSPE1 less than the offset threshold levels before implementing the project being evaluated

$$\text{Offsets Required (lb/year)} = (\Sigma[\text{PE2} - \text{BE}] + \text{ICCE}) \times \text{DOR}$$

Where,

- SSPE2 = Post Project Stationary Source Potential to Emit
- ROT = Respective Offset Threshold, for the respective pollutant
- ICCE = Increase in Cargo Carrier Emissions
- DOR = Distance Offset Ratio, determined pursuant to Section 4.8

BE = Pre-project Potential to Emit for

- Any unit located at a non-Major Source,
- Any Highly-Utilized Emissions Unit, located at a Major Source,
- Any Fully-Offset Emissions Unit, located at a Major Source, or
- Any Clean Emissions Unit, Located at a Major Source

otherwise,

BE = Historic Actual Emissions (HAE)

There is only one emissions unit associated with this project and there are no increases in cargo carrier emissions, therefore offsets can be determined as follows

Offset Calculations

$$\begin{aligned} \text{Offsets Required (lb/year)} &= ([\text{PE2} - \text{BE}]) \times \text{DOR} \\ \text{BE} &= 0 \text{ (new emissions unit)} \end{aligned}$$

NOx

$$\text{PE2} = 1445 \text{ lb NOx/yr}$$

The DOR = 1.5 (Federal Major Modification), the amount of NOx ERCs that need to be withdrawn is

$$\begin{aligned} \text{Offsets Required (lb/year)} &= 1445 \times 1.5 \\ &= 2168 \text{ lb-NOX/year} \end{aligned}$$

The quarterly ERC required is as follows

<u>Pollutant</u>	<u>1st Quarter</u>	<u>2nd Quarter</u>	<u>3rd Quarter</u>	<u>4th Quarter</u>
NOx	542	542	542	542

The applicant has stated that the facility plans to use ERC certificate N-1148-2, or a certificate derived from it, to offset the increases in NOx emissions associated with this project. The above quarterly quantities have been reserved for the project.

PM₁₀

$$PE2 = 394 \text{ lb/yr}$$

Assuming DOR = 1.5, the amount of PM₁₀ ERCs that need to be withdrawn is

$$\begin{aligned} \text{Offsets Required (lb/year)} &= 394 \times 1.5 \\ &= 591 \text{ lb-PM}_{10}/\text{year} \end{aligned}$$

The quarterly ERC required is as follows

<u>Pollutant</u>	<u>1st Quarter</u>	<u>2nd Quarter</u>	<u>3rd Quarter</u>	<u>4th Quarter</u>
PM ₁₀	148	148	148	148

The applicant has stated that the facility plans to use ERC C-809-4 or certificates derived from it to offset the increases in PM₁₀ emissions associated with this project.

Per District Rule 2201, Section 4.13.8 AER for PM that occurred from October through March, inclusive, may be used to offset increases in PM during any period of the year. The above quarterly quantities have been reserved from the fourth quarter of this certificate for the project.

CO

$$PE2 = 2,365 \text{ lb/yr}$$

Notwithstanding the above, Section 4.6.1 of Rule 2201 states that emissions offsets are not required for increases in carbon monoxide in attainment areas provided the applicant demonstrates to the satisfaction of the APCO that the Ambient Air Quality Standards are not violated in the areas to be affected and such emissions will be consistent with Reasonable Further Progress and will not cause or contribute to a violation of Ambient Air Quality Standards. The District performed an Ambient Air Quality Analysis (discussed later) and determined that this project will not result in or contribute to a violation of an Ambient Air Quality Standard for CO (see **Attachment V**). Therefore, CO offsets are not required for this project.

VOC

$$PE2 = 723 \text{ lb VOC/yr}$$

Assuming DOR = 1.5 (Federal Major Modification), the amount of VOC ERCs that need to be withdrawn is

$$\begin{aligned} \text{Offsets Required (lb/year)} &= 723 \times 1.5 \\ \text{Offsets Required (lb/year)} &= 1,085 \end{aligned}$$

Calculating the appropriate quarterly emissions to be offset is as follows

DOR = 1.5

<u>Pollutant</u>	<u>1st Quarter</u>	<u>2nd Quarter</u>	<u>3rd Quarter</u>	<u>4th Quarter</u>
VOC	271	271	271	271

The applicant has stated that the facility plans to use ERC certificates S-3777-1 to offset the increases in VOC emissions associated with this project. The above quarterly quantities have been reserved for the project.

As seen above, the facility has sufficient credits to fully offset the quarterly NO_x, PM₁₀ and VOC emissions increases associated with this project.

Proposed Rule 2201 (offset) Conditions

- Prior to operating equipment under this Authority to Construct, permittee shall surrender emission reduction credits for the following quantities of emissions: NO_x 542 lb/quarter, PM₁₀ 148 lb/quarter, and VOC 271 lb/qtr. Offsets include the applicable offset ratio specified in Section 4.8 of Rule 2201 (as amended 4/21/11). [District Rule 2201] Y
- ERC Certificate Numbers C-809-4, N-1148-2, and S-3777-1 (or certificates split from these certificates) shall be used to supply the required offsets, unless a revised offsetting proposal is received and approved by the District, upon which this Authority to Construct shall be reissued administratively specifying the new offsetting proposal. Original public noticing requirements, if any, shall be duplicated prior to reissuance of this Authority to Construct. [District Rule 2201] Y

C Public Notification

1 Applicability

Public noticing is required for

- a New Major Sources, Federal Major Modifications, and SB288 Major Modifications,
- b Any new emissions unit with a Potential to Emit greater than 100 pounds during any one day for any one pollutant,
- c Any project which results in the offset thresholds being surpassed, and/or
- d Any project with an SSIP of greater than 20,000 lb/year for any pollutant

a New Major Sources, Federal Major Modifications, and SB288 Major Modifications

New Major Sources are new facilities, which are also Major Sources. Since this is not a new facility, public noticing is not required for this project for New Major Source purposes.

As demonstrated in VII C 7, this project does not constitute a SB 288, therefore, public noticing for SB 288 purposes is not required.

As demonstrated in VII C 8, this project is a Federal Major Modification, therefore, public noticing for Federal Major Modification purposes is required

b PE > 100 lb/day

Applications which include a new emissions unit with a Potential to Emit greater than 100 pounds during any one day for any pollutant will trigger public noticing requirements. As seen in Section VII C 2 above, this project does not include a new emissions unit which has daily emissions greater than 100 lb/day for any pollutant, therefore public noticing for PE > 100 lb/day purposes is not required

c Offset Threshold

The following table compares the SSPE1 with the SSPE2 in order to determine if any offset thresholds have been surpassed with this project

Offset Threshold				
Pollutant	SSPE1 (lb/year)	SSPE2 (lb/year)	Offset Threshold	Public Notice Required?
NO _x	147,133	148,578	20,000 lb/year	No
SO _x	51,780	52,154	54,750 lb/year	No
PM ₁₀	51,941	52,335	29,200 lb/year	No
CO	348,451	353,313	200,000 lb/year	No
VOC	190,181	190,904	20,000 lb/year	No

As detailed above, there were no thresholds surpassed with this project, therefore public noticing is not required for offset purposes

d SSIPE > 20,000 lb/year

Public notification is required for any permitting action that results in a SSIPE of more than 20,000 lb/year of any affected pollutant. According to District policy, the SSIPE = SSPE2 – SSPE1. The SSIPE is compared to the SSIPE Public Notice thresholds in the following table

SSIPE Public Notice Thresholds					
Pollutant	SSPE2 (lb/year)	SSPE1 (lb/year)	SSIPE (lb/year)	SSIPE Public Notice Threshold	Public Notice Required?
NO _x	148,578	147,133	1,445	20,000 lb/year	No
SO _x	52,154	51,780	374	20,000 lb/year	No
PM ₁₀	52,335	51,941	394	20,000 lb/year	No
CO	353,313	348,451	4,862	20,000 lb/year	No
VOC	190,904	190,181	723	20,000 lb/year	No

As demonstrated above, the SSIPEs for all pollutants were less than 20,000 lb/year, therefore public noticing for SSIPE purposes is not required

2 Public Notice Action

As discussed above, public noticing is required Federal Major Modification purposes. Therefore, public notice documents will be submitted to the California Air Resources Board (CARB) and a public notice will be published in a local newspaper of general circulation prior to the issuance of the ATC for this equipment.

D Daily Emission Limits (DELs)

Daily Emissions Limitations (DELs) and other enforceable conditions are required by Section 3.15 to restrict a unit's maximum daily emissions, to a level at or below the emissions associated with the maximum design capacity. Per Sections 3.15.1 and 3.15.2, the DEL must be contained in the latest ATC and contained in or enforced by the latest PTO and enforceable, in a practicable manner, on a daily basis. DELs are also required to enforce the applicability of BACT.

For this heater/treater the DELs are stated in the form of emission factors and the maximum operational time of 24 hours per day.

Proposed Rule 2201 (DEL) Conditions

- Emissions from the natural gas-fired unit shall not exceed any of the following limits: 9 ppmvd NO_x @ 3% O₂ or 0.011 lb-NO_x/MMBtu, 0.00285 lb SO_x/MMBtu, 0.003 lb-PM₁₀/MMBtu, 50 ppmvd CO @ 3% O₂ or 0.037 lb-CO/MMBtu, or 0.0055 lb VOC/MMBtu [District Rules 2201, 4201, 4301, 4305, 4306, 4320, and 4801].
- The unit shall only be fired on gas with a maximum sulfur content of 1.0 gr S/100scf [District Rules 2201 and 4320]. Y

E Compliance Assurance

1 Source Testing

Pursuant to District Policy APR 1705, start-up source testing for NO_x, CO, and PM₁₀ (startup only) will be required to demonstrate compliance with Rule 2201 as stated in the following conditions:

A source test to demonstrate compliance with NO_x, CO, and PM₁₀ emission limits shall be performed within 60 days of startup [District Rules 2201 and 4320]. Y

Source testing to measure natural gas-combustion NO_x and CO emissions from this unit shall be conducted at least once every twelve (12) months (no more than 30 days before or after the required annual source test date). After demonstrating compliance on two (2) consecutive annual source tests, the unit shall be tested not less than once every thirty-six (36) months (no more than 30 days before or after the required 36-month source test date). If the result of the 36-month source test demonstrates that the unit does not meet the applicable emission limits, the source testing frequency shall revert to at least once every twelve (12) months [District Rules 2201, 4305, 4306, and 4320]. Y

Additionally, the unit is subject to District Rule 4305, Boilers, Steam Generators and Process Heaters, Phase 2; District Rule 4306, Boilers, Steam Generators and Process Heaters, Phase 3; and District Rule 4320, Advanced Emission Reduction Options for

Boilers, Steam Generators, and Process Heaters Greater than 50 MMBtu/hr Source testing requirements, in accordance with District Rules 4305, 4306, and 4320 will be discussed in Section VIII, District Rule 4320 of this evaluation

2 Monitoring

As required by District Rule 4305, Boilers, Steam Generators and Process Heaters, Phase 2, District Rule 4306, Boilers, Steam Generators and Process Heaters, Phase 3, and District Rule 4320 Advanced Emission Reduction Options for Boilers, Steam Generators, and Process Heaters Greater than 50 MMBtu/hr, this unit is subject to monitoring requirements. Monitoring requirements, in accordance with District Rules 4305, 4306, and 4320 will be discussed in Section VIII, District Rule 4320 of this evaluation

3 Recordkeeping

Recordkeeping is required to demonstrate compliance with the offset, public notification and daily emission limit requirements of Rule 2201. The appropriate permit conditions to ensure that recordkeeping sufficient to demonstrate compliance will be developed and proposed by the District

- {4356} Permittee shall determine sulfur content of combusted gas annually or shall demonstrate that the combusted gas is provided from a PUC or FERC regulated source [District Rules 1081 and 4320] N
- Permittee shall maintain accurate records of valid purchase contracts, supplier certifications, tariff sheets, or transportation contracts used to satisfy the fuel sulfur content analysis of fuel combusted in process heater, provided they establish the fuel sulfur concentration and higher heating value [District Rule 2201 and 4320] N
- {2983} All records shall be maintained and retained on-site for a minimum of five (5) years and shall be made available for District inspection upon request [District Rules 1070, 4305, and 4306] N

The heater treater is subject to District Rule 4305 *Boilers, Steam Generators and Process Heaters, Phase 2*, District Rule 4306 *Boilers, Steam Generators and Process Heaters, Phase 3*, and District Rule 4320, *Advanced Emission Reduction Options for Boilers, Steam Generators, and Process Heaters Greater than 5 MMBtu/hr*. Recordkeeping, in accordance with these rules will be discussed in Section VIII of this evaluation

4 Reporting

No reporting is required to demonstrate compliance with Rule 2201

F Ambient Air Quality Analysis

Section 4.6.1 of this rule states that emissions offsets are not required for increases in carbon monoxide in attainment areas provided the applicant demonstrates to the satisfaction of the APCO that the Ambient Air Quality Standards are not violated in the areas to be affected,

such emissions will be consistent with Reasonable Further Progress, and will not cause or contribute to a violation of Ambient Air Quality Standards

Section 4 14 1 of this Rule requires that an ambient air quality analysis (AAQA) be conducted for the purpose of determining whether a new or modified Stationary Source will cause or make worse a violation of an air quality standard

The proposed location is in an attainment area for NO_x, CO, and SO_x. The proposed location is in a non-attainment area for PM₁₀. The increase in criteria pollutants due to the proposed equipment will not cause a violation as shown on the table below titled "Criteria pollutant Modeling Results"

The results from the Criteria Pollutant Modeling are as follows

Criteria Pollutant Modeling Results*

	1 Hour	3 Hours	8 Hours	24 Hours	Annual
CO	Pass	X	Pass	X	X
NO _x	Pass	X	X	X	Pass
SO _x	Pass	Pass	X	Pass	Pass
PM ₁₀	X	X	X	Pass ²	Pass ²
PM _{2.5}	X	X	X	Pass ²	Pass ²

*Results were taken from the attached PSD spreadsheet

¹The project was compared to the 1-hour NO₂ National Ambient Air Quality Standard that became effective on April 12, 2010 using the District's approved procedures

²The criteria pollutants are below EPA's level of significance as found in 40 CFR Part 51.165 (b)(2)

As shown, the calculated contribution of CO, NO_x, SO_x, PM₁₀, and PM_{2.5}, will not exceed the EPA significance level. This project is not expected to cause or make worse a violation of an air quality standard. See **Attachment V** of this document for the AAQA summary sheet.

G Compliance Certification

Section 4 15 2 of this Rule requires the owner of a new Major Source or a source undergoing a Title I Modification to demonstrate to the satisfaction of the District that all other Major Sources owned by such person and operating in California are in compliance or are on a schedule for compliance with all applicable emission limitations and standards. As discussed in Sections VIII-Rule 2201-C 1 a and VIII-Rule 2201-C 1 b, this facility is a new major source and this project does constitute a Title I modification, therefore this requirement is applicable. Included in **Attachment VI** is VPC's Statewide Compliance Statement.

H Alternate Siting Analysis

Since the project will be at the facility location, the existing site will result in the least possible impact from the project. Alternative sites would involve the relocation and/or construction of various support structures on a much greater scale, and would therefore result in a much greater impact.

Rule 2520 Federally Mandated Operating Permits

This facility is subject to this Rule and has received their Title V Operating Permit. Section 3.29 defines a significant permit modification as a permit amendment that does not qualify as a minor permit modification or administrative amendment."

The project is Federal Major Modification and therefore is also a Title V Significant Modification. As discussed above, the facility has applied for a Certificate of Conformity (COC), therefore, the facility must apply to modify their Title V permit with an administrative amendment, prior to operating with the proposed modifications. Included in **Attachment VII** is VPC's Title V Compliance Certification form. Continued compliance with this rule is expected.

Rule 4001 New Source Performance Standards (NSPS)

This rule incorporates NSPS from Part 60, Chapter 1, Title 40, Code of Federal Regulations (CFR) and applies to all new sources of air pollution and modifications of existing sources of air pollution listed in 40 CFR Part 60. 40 CFR Part 60 Subpart Dc applies to Small Industrial-Commercial-Industrial Process heaters between 10 MMBtu/hr and 100 MMBtu/hr.

This heater treater has a rating of 15 MMBtu/hr and is fired on natural gas or a natural gas produced gas mixture. Subpart Dc has no standards for gas-fired steam generators. Therefore, testing and monitoring requirements of subpart Dc do not apply.

Subpart Dc, subpart 60.48c requires the owner or operator of each affected facility to submit notification of the date of construction or reconstruction, anticipated startup, actual startup, as provided by §60.7 of this part. Notification shall include:

- (1) The design heat input capacity of the facility and identification of the fuels to be combusted.

The designed heat input capacity and the identified fuels will be listed on the equipment description. No other permit conditions are required.

- (2) If applicable, a copy of any federally enforceable requirements that limit the annual capacity factor for any fuel mixture of fuel under §60.42c or §60.43c.

The requirements are not applicable since the unit is not subject to §60.42c or §60.43c.

- (3) The annual capacity factor at which the owner or operator anticipates operating the affected facility based on all fuels fired and based on each individual fuel fired.

The facility has not proposed an annual capacity factor and one will not be imposed on the facility.

- (4) Notification if an emerging technology will be used for controlling SO₂ emissions. The Administrator will examine the description of the control and will determine whether the technology qualifies as an emerging technology. In making this determination, the Administrator may require the owner or operator of the affected facility to submit

additional information concerning the control device. The affected facility is subject to the provisions of §60 42c (a) or (b)1, unless the unit determination is made by the Administrator.

The requirements are not applicable since the unit will not be equipped with emerging technology.

Section 60 48c(g) states that the owner or operator of each affected facility shall record and maintain records of the amounts of each fuel combusted during each day.

Since the unit has been evaluated assuming that it will consume the maximum amount of fuel allowed by the unit each day, the facility will not be required to record the daily fuel consumption.

Section 60 48c(i) states that all records required under this section shall be maintained by the owner operator of the affected facility for a period of two years following the date of such record. District Rule 4306 requires that records be kept for 5 years.

Rule 4101 Visible Emissions

Per Section 5 0, no person shall discharge into the atmosphere emissions of any air contaminant aggregating more than 3 minutes in any hour which is as dark as or darker than Ringelmann 1 (or 20% opacity). As the steam generator is fired solely on natural gas, visible emissions are not expected to exceed Ringelmann 1 or 20% opacity. The following condition is listed on the facility wide permit ensures compliance.

- No air contaminant shall be discharged into the atmosphere for a period or periods aggregating more than three minutes in any one hour which is as dark as or darker than Ringelmann 1 or 20% opacity [District Rule 4101]

Rule 4102 Nuisance

Section 4 0 prohibits discharge of air contaminants which could cause injury, detriment, nuisance or annoyance to the public. Public nuisance conditions are not expected as a result of these operations provided the equipment is well maintained. Therefore, compliance with this rule is expected. This facility wide permit for VPC contains the following condition.

- No air contaminant shall be released into the atmosphere which causes a public nuisance [District Rule 4102]

California Health & Safety Code 41700 (Health Risk Assessment)

District Policy APR 1905 – Risk Management Policy for Permitting New and Modified Sources specifies that for an increase in emissions associated with a proposed new source or modification, the District perform an analysis to determine the possible impact to the nearest resident or worksite.

An HRA is not required for a project with a total facility prioritization score of less than one. According to the Technical Services Memo for this project (**Attachment V**), the total facility

prioritization score including this project was greater than one Therefore, an HRA was required to determine the short-term acute and long-term chronic exposure from this project

The health risk for this project is shown below

RMR Summary			
Categories	15 MMBtu/hr NG-Fired Heater (Unit 437-0)	Project Totals	Facility Totals
Prioritization Score	0 0	<1 0	>1 0
Acute Hazard Index	0 00	0 00	0 02
Chronic Hazard Index	0 00	0 00	0 01
Maximum Individual Cancer Risk (10^{-6})	0 0	0 0	1 1
T BACT Required?	No		
Special Permit Conditions?	No		

The project is approved without TBACT with the following special condition

The exhaust stacks shall vent vertically upward The vertical exhaust flow shall not be impeded by a rain cap (flapper ok) roof overhang or any other obstruction [District Rule 4102]

Rule 4201 Particulate Matter Concentration

Section 3 1 prohibits discharge of dust, fumes, or total particulate matter into the atmosphere from any single source operation in excess of 0 1 grain per dry standard cubic foot

F-Factor for NG 8 578 dscf/MMBtu at 60 °F

PM10 Emission Factor 0 0076 lb-PM10/MMBtu

Percentage of PM as PM10 in Exhaust 100%

Exhaust Oxygen (O₂) Concentration 3%

Excess Air Correction to F Factor = $20.9 / (20.9 - 3) = 1.17$

$$GL = \left(\frac{0.003 \text{ lb} - PM}{MMBtu} \right) * \left(\frac{7,000 \text{ grain}}{\text{lb} - PM} \right) / \left(\frac{8,578 \text{ ft}^3}{MMBtu} * 1.17 \right)$$

$$GL = 0.003 \text{ grain} / \text{dscf} < 0.1 \text{ grain} / \text{dscf}$$

Therefore, compliance with District Rule 4201 requirements is expected Additionally, particulate matter emissions from the steam generator is already limited by Rule 2201 to a value less than or equal to the rule limit of 0 1 grain per cubic foot of gas at dry standard conditions Therefore the following condition, previously discussed, will ensure compliance with this rule

- Emissions from the natural gas-fired unit shall not exceed any of the following limits 9 ppmvd NO_x @ 3% O₂ or 0 011 lb-NO_x/MMBtu 0 00285 lb SO_x/MMBtu 0 0076 lb-PM10/MMBtu 50 ppmvd CO @ 3% O₂

or 0.037 lb-CO/MMBtu, or 0.0055 lb-VOC/MMBtu. [District Rules 2201, 4201, 4301, 4305, 4306, 4320, and 4801]

Rule 4301 Fuel Burning Equipment

This rule specifies maximum emission rates in lb/hr for SO₂, NO₂, and combustion contaminants (defined as total PM in Rule 1020). This rule also limits combustion contaminants to ≤ 0.1 gr/scf. According to AP 42 (Table 1.4-2, footnote c), all PM emissions from natural gas combustion are less than 1 μm in diameter.

District Rule 4301 Limits (lb/hr)			
Pollutant	NO ₂	Total PM	SO ₂
S-1326-437-0	0.011 x 15 = 0.17	0.003 x 15 = 0.05	0.00285 x 15 = 0.04
Rule Limit (lb/hr)	140	10	200

The above table indicates compliance with the maximum lb/hr emissions in this rule;

Rule 4304 Equipment Tuning Procedure for Boilers, Steam Generators and Process Heaters

This rule provides equipment tuning procedures for boilers, steam generators and process heaters to control visible emissions and emissions of both nitrogen oxides (NO_x) and carbon monoxide (CO).

This unit follows District approved Alternate Monitoring scheme A, where the applicable emission limits are periodically monitored for compliance with Rule 4320 and is not required to perform tuning in accordance with the procedures of this Rule.

Rule 4305 Boilers, Steam Generators and Process Heaters – Phase II

This unit is natural gas-fired with a maximum heat input of 85 MMBtu/hr. Pursuant to Section 2.0 of District Rule 4305, the unit is subject to District Rule 4305, *Boilers, Steam Generators and Process Heaters – Phase 2*.

In addition, the unit is also subject to District Rule 4306, *Boilers, Steam Generators and Process Heaters – Phase 3*.

Since the emissions limits of District Rule 4306 and all other requirements are equivalent or more stringent than District Rule 4305 requirements, compliance with District Rule 4306 requirements will satisfy the requirements of District Rule 4305.

Rule 4306 Boilers, Steam Generators and Process Heaters – Phase III

This unit is natural gas-fired with a maximum heat input of 15 MMBtu/hr. Pursuant to Section 2.0 of District Rule 4306, the unit is subject to District Rule 4306.

In addition, the unit is also subject to *District Rule 4320, Advanced Emission Reduction Options for Boilers, Steam Generators, and Process Heaters Greater than 5 MMBtu/hr.*

Since the emissions limits of District Rule 4320 and all other requirements are equivalent or more stringent than District Rule 4306 requirements, compliance with District Rule 4320 requirements will satisfy the requirements of District Rule 4306.

Rule 4320 Advanced Emission Reduction Options for Boilers, Steam Generators, and Process Heaters Greater than 5.0 MMBtu/hr

Section 5.2 NO_x and CO Emission Limits

The 15 MMBtu/hr process heater is subject to the following NO_x limits in Table 2, as shown below.

The applicant has proposed to meet the standard schedule NO_x emission limit.

Rule 4320 Emissions Limits				
Category	Operated on gaseous fuel		Operated on liquid fuel	
	NO _x Limit	CO Limit	NO _x Limit	CO Limit
A. Units with a total rated heat input > 5.0 MMBtu/hr to < 20.0 MMBtu/hr, except for Categories C through G units	a) Standard Schedule 9 ppmv or 0.011 lb/MMBtu; or	400 ppmv	40 ppmv or 0.052 lb/MMBtu	400 ppmv
	b) Enhanced Schedule 6 ppmv or 0.007 lb/MMBtu			

The proposed NO_x emission factor is 9 ppmvd @ 3% O₂ (0.011 lb/MMBtu), and the proposed CO emission factor is 50 ppmvd @ 3% O₂ (0.037 lb/MMBtu).

Therefore, compliance with Section 5.2 of District Rule 4320 is expected.

A permit condition listing the emissions limits will be listed on permit as shown in the DEL section above.

Section 5.4 Particulate Matter Control Requirements

Section 5.4 of the rule requires one of four options for control of particulate matter: 1) combustion of PUC-quality natural gas, commercial propane, butane, or liquefied petroleum gas, or a combination of such gases, 2) limit fuel sulfur content to no more than five (5) grains of total sulfur per one hundred (100) standard cubic, 3) install and properly operate an emission control system that reduces SO₂ emissions by at least 95% by weight; or limit exhaust SO₂ to less than or equal to 9 ppmv corrected to 3.0% O₂ or 4) refinery units, which require modification

of refinery equipment to reduce sulfur emissions shall be in compliance with the applicable requirement in Section 5 4 1 no later than July 1, 2013

The heater treater will only combust natural gas containing no more than 1 gr S/100 scf

Section 5 6, Startup and Shutdown Provisions

Applicable emissions limits are not required during startup and shutdown provided The duration of each start-up or each shutdown shall not exceed two hours, the emission control system shall be in operation and emissions shall be minimized insofar as technologically feasible during start-up or shutdown or operator has submitted an application for a Permit to Operate condition to allow more than two hours for each start-up or each shutdown provided the operator meets all of the conditions specified in Sections 5 6 3 1 through 5 6 3 3

Startup and shutdown conditions have not been proposed

Section 5 7, Monitoring Provisions

Section 5 7 requires either use of a APCO approved Continuous Emissions Monitoring System (CEMS) for NO_x, CO, and oxygen, or implementation of an APCO-approved Alternate Monitoring System

In order to satisfy the requirements of District Rule 4320, the applicant has proposed to use pre-approved alternate monitoring scheme A (pursuant to District Policy SSP-1105), which requires that monitoring of NO_x, CO, and O₂ exhaust concentrations shall be conducted at least once per month (in which a source test is not performed) using a portable analyzer The following conditions will be incorporated into the permit in order to ensure compliance with the requirements of the proposed alternate monitoring plan

- {4063} The permittee shall monitor and record the stack concentration of NO_x, CO, and O₂ at least once every month (in which a source test is not performed) using a portable analyzer that meets District specifications Monitoring shall not be required if the unit is not in operation i.e. the unit need not be started solely to perform monitoring Monitoring shall be performed within 5 days of restarting the unit unless monitoring has been performed within the last month [District Rules 4305, 4306, and 4320]
- {4064} If either the NO_x or CO concentrations corrected to 3% O₂ as measured by the portable analyzer exceed the allowable emissions concentration the permittee shall return the emissions to within the acceptable range as soon as possible but no longer than 1 hour of operation after detection If the portable analyzer readings continue to exceed the allowable emissions concentration after 1 hour of operation after detection the permittee shall notify the District within the following 1 hour and conduct a certified source test within 60 days of the first exceedance In lieu of conducting a source test the permittee may stipulate a violation has occurred subject to enforcement action The permittee must then correct the violation show compliance has been re-established and resume monitoring procedures If the deviations are the result of a qualifying breakdown condition pursuant to Rule 1100 the permittee may fully comply with Rule 1100 in lieu of the performing the notification and testing required by this condition [District Rules 4305, 4306, and 4320]
- {4065} All alternate monitoring parameter emission readings shall be taken with the unit operating either at conditions representative of normal operations or conditions specified in the permit to-operate The analyzer shall be calibrated, maintained, and operated in accordance with the manufacturer's specifications and recommendations or a protocol approved by the APCO Emission readings taken shall be averaged over a 15 consecutive-minute period by either taking a cumulative 15 consecutive-minute

sample reading or by taking at least five (5) readings evenly spaced out over the 15 consecutive-minute period [District Rules 4305 4306 and 4320]

- {4066} The permittee shall maintain records of (1) the date and time of NO_x CO and O₂ measurements (2) the O₂ concentration in percent by volume and the measured NO_x and CO concentrations corrected to 3% O₂ (3) make and model of exhaust gas analyzer (4) exhaust gas analyzer calibration records and (5) a description of any corrective action taken to maintain the emissions within the acceptable range [District Rules 4305 4306 and 4320]

5 7 6 Monitoring SO_x Emissions

Section 5 7 6 1 Operators complying with Sections 5 4 1 1 or 5 4 1 2 shall provide an annual fuel analysis to the District unless a more frequent sampling and reporting period is included in the Permit To Operate Sulfur analysis shall be performed in accordance with the test methods in Section 6 2

Section 5 7 6 2 Operators complying with Section 5 4 1 3 by installing and operating a control device with 95% SO_x reduction shall propose the key system operating parameters and frequency of the monitoring and recording The monitoring option proposed shall be submitted for approval by the APCO

Section 5 7 6 3 Operators complying with Section 5 4 1 3 shall perform an annual source test unless a more frequent sampling and reporting period is included in the Permit To Operate Source tests shall be performed in accordance with the test methods in Section 6 2

- The unit shall only be fired on gas with a maximum sulfur content of 1 0 gr S/100scf [District Rules 2201 and 4320] N
- Permittee shall determine sulfur content of combusted gas annually or shall demonstrate that the combusted gas is provided from a PUC or FERC regulated source [District Rules 2201 and 4320] N
- Valid purchase contracts supplier certifications tariff sheets or transportation contracts may be used to satisfy the fuel sulfur content analysis provided they establish the fuel sulfur concentration and higher heating value [District Rule 4320] N

Section 5 8 Compliance Determination

Section 5 8 1 requires that the operator of any unit have the option of complying with either the applicable heat input (lb/MMBtu), emission limits or the concentration (ppmv) emission limits specified in Section 5 2 The emission limits selected to demonstrate compliance shall be specified in the source test proposal pursuant to Rule 1081 (Source Sampling) Therefore, the following condition will be retained or listed on the permits as follows

- {2976} The source plan shall identify which basis (ppmv or lb/MMBtu) will be used to demonstrate compliance [District Rules 4305 4306 and 4320]

Section 5 8 2 requires that all emissions measurements shall be made with the unit operating either at conditions representative of normal operations or conditions specified in the Permit to Operate Unless otherwise specified in the Permit to Operate, no determination of compliance shall be established within two hours after a continuous period in which fuel flow to the unit is shut off for 30 minutes or longer, or within 30 minutes after a re-ignition as defined in Section 3 0 Therefore, the following permit condition will be listed on the permits as follows

- {2972} All emissions measurements shall be made with the unit operating either at conditions representative of normal operations or conditions specified in the Permit to Operate. Unless otherwise specified in the Permit to Operate, no determination of compliance shall be established within two hours after a continuous period in which fuel flow to the unit is shut off for 30 minutes or longer, or within 30 minutes after a re-ignition as defined in Section 3.0 of District Rule 4320. For the purposes of permittee-performed alternate monitoring, emissions measurements may be performed at any time after the unit reaches conditions representative of normal operation. [District Rules 4305, 4306 and 4320]

Section 5.8.4 requires that for emissions monitoring pursuant to Sections 5.7.1 and 6.3.1 using a portable NO_x analyzer as part of an APCO approved Alternate Emissions Monitoring System, emission readings shall be averaged over a 15 consecutive-minute period by either taking a cumulative 15-consecutive-minute sample reading or by taking at least five (5) readings evenly spaced out over the 15-consecutive-minute period. Therefore, the following previously listed permit condition will be on the permits as follows:

- {2937} All alternate monitoring parameter emission readings shall be taken with the unit operating either at conditions representative of normal operations or conditions specified in the permit-to-operate. The analyzer shall be calibrated, maintained, and operated in accordance with the manufacturer's specifications and recommendations or a protocol approved by the APCO. Emission readings taken shall be averaged over a 15 consecutive-minute period by either taking a cumulative 15 consecutive-minute sample reading or by taking at least five (5) readings evenly spaced out over the 15 consecutive-minute period. [District Rules 4305, 4306 and 4320]

Section 5.8.5 requires that for emissions source testing performed pursuant to Section 6.3.1 for the purpose of determining compliance with an applicable standard or numerical limitation of this rule, the arithmetic average of three (3) 30-consecutive-minute test runs shall apply. If two (2) of three (3) runs are above an applicable limit, the test cannot be used to demonstrate compliance with an applicable limit. Therefore, the following permit condition will be listed on the permit as follows:

- {2980} For emissions source testing, the arithmetic average of three 30-consecutive-minute test runs shall apply. If two of three runs are above an applicable limit, the test cannot be used to demonstrate compliance with an applicable limit. [District Rules 4305, 4306 and 4320]

Section 6.1 Recordkeeping

Section 6.1 requires that the records required by Sections 6.1.1 through 6.1.5 shall be maintained for five calendar years and shall be made available to the APCO and EPA upon request. Failure to maintain records or information contained in the records that demonstrate noncompliance with the applicable requirements of this rule shall constitute a violation of this rule. Therefore, the following permit condition will be listed on the permit as follows:

- All records shall be maintained and retained on-site for a minimum of five (5) years and shall be made available for District inspection upon request. [District Rules 1070, 4305, 4306, 4320 and 40 CFR 60.48c(i)]

Section 6.2, Test Methods

Section 6.2 identifies test methods to be used when determining compliance with the rule. The following conditions will be listed on the permits:

{109} Source testing shall be conducted using the methods and procedures approved by the District. The District must be notified at least 30 days prior to any compliance source test and a source test plan must be submitted for approval at least 15 days prior to testing [District Rule 1081]

- The following test methods shall be used: NO_x (ppmv) - EPA Method 7E or ARB Method 100; NO_x (lb/MMBtu) - EPA Method 19; CO (ppmv) - EPA Method 10 or ARB Method 100; Stack gas oxygen (O₂) - EPA Method 3 or 3A or ARB Method 100; stack gas velocities - EPA Method 2; Stack gas moisture content - EPA Method 4; SO_x - EPA Method 6C or 8 or ARB Method 100; fuel gas sulfur as H₂S content - EPA Method 11 or 15; and fuel hhv (MMBtu) - ASTM D 1826 or D 1945 in conjunction with ASTM D 3588 [District Rules 4305, 4306 and 4320]

Section 6.3, Compliance Testing

Section 6.3.1 requires that each unit subject to the requirements in Section 5.2 shall be source tested at least once every 12 months, except if two consecutive annual source tests demonstrate compliance, source testing may be performed every 36 months. If such a source test demonstrates non-compliance, source testing shall revert to every 12 months. The following conditions will be included in the permits:

- A source test to demonstrate compliance with NO_x and CO emission limits shall be performed within 60 days of startup of this unit [District Rules 2201 and 4320]
- Source testing to measure natural gas-combustion NO_x and CO emissions from this unit shall be conducted at least once every twelve (12) months (no more than 30 days before or after the required annual source test date). After demonstrating compliance on two (2) consecutive annual source tests, the unit shall be tested not less than once every thirty-six (36) months (no more than 30 days before or after the required 36-month source test date). If the result of the 36-month source test demonstrates that the unit does not meet the applicable emission limits, the source testing frequency shall revert to at least once every twelve (12) months [District Rules 2201, 4305, 4306 and 4320]
- {110} The results of each source test shall be submitted to the District within 60 days thereafter [District Rule 1081]

Sections 6.3.2.1 through 6.3.2.7 address the requirements of group testing which is not proposed in this project. Therefore, these sections are not applicable.

Conclusion

Conditions will be incorporated into the permit in order to ensure compliance with each section of this rule, see attached draft permits. Therefore, compliance with District Rule 4320 requirements is expected.

District Rule 4351 Boilers, Steam Generators and Process Heaters – Phase 1

This rule applies to boilers, steam generators, and process heaters at NO_x Major Sources that are not located west of Interstate 5 in Fresno, Kings, or Kern counties. If applicable, the emission limits, monitoring provisions, and testing requirements of this rule are satisfied when the unit is operated in compliance with Rule 4320. Therefore, compliance with this rule is expected.

District Rule 4801 Sulfur Compounds

A person shall not discharge into the atmosphere sulfur compounds, which would exist as a liquid or gas at standard conditions, exceeding in concentration at the point of discharge: 0.2 % by volume calculated as SO₂, on a dry basis averaged over 15 consecutive minutes.

The 15 MMBtu/hr heater treater will be fired on natural gas containing no more than 1 gr S/100 scf and therefore compliance is expected.

Therefore, compliance with District Rule 4801 requirements is expected.

California Environmental Quality Act (CEQA)

CEQA requires each public agency to adopt objectives, criteria, and specific procedures consistent with CEQA Statutes and the CEQA Guidelines for administering its responsibilities under CEQA, including the orderly evaluation of projects and preparation of environmental documents. The District adopted its *Environmental Review Guidelines* (ERG) in 2001. The basic purposes of CEQA are to:

- Inform governmental decision-makers and the public about the potential, significant environmental effects of proposed activities;
- Identify the ways that environmental damage can be avoided or significantly reduced;
- Prevent significant, avoidable damage to the environment by requiring changes in projects through the use of alternatives or mitigation measures when the governmental agency finds the changes to be feasible; and
- Disclose to the public the reasons why a governmental agency approved the project in the manner the agency chose if significant environmental effects are involved.

Facility S-1326 is subject to ARB's Cap and Trade regulation. Consistent with CCR §15064(h)(3), the District finds that compliance with ARB's Cap and Trade regulation would avoid or substantially lessen the impact of project-specific GHG emissions on global climate change. The District therefore concludes that projects occurring at facilities subject to ARB's Cap and Trade regulation would have a less than significant individual and cumulative impact on global climate change.

IX. RECOMMENDATION

Compliance with all applicable rules and regulations is expected. Pending a successful EPA/COC review period, issue Authority to Construct S-1326-437-0 subject to the permit conditions on the attached draft Authority to Construct in **Attachment VIII**.

X. BILLING INFORMATION

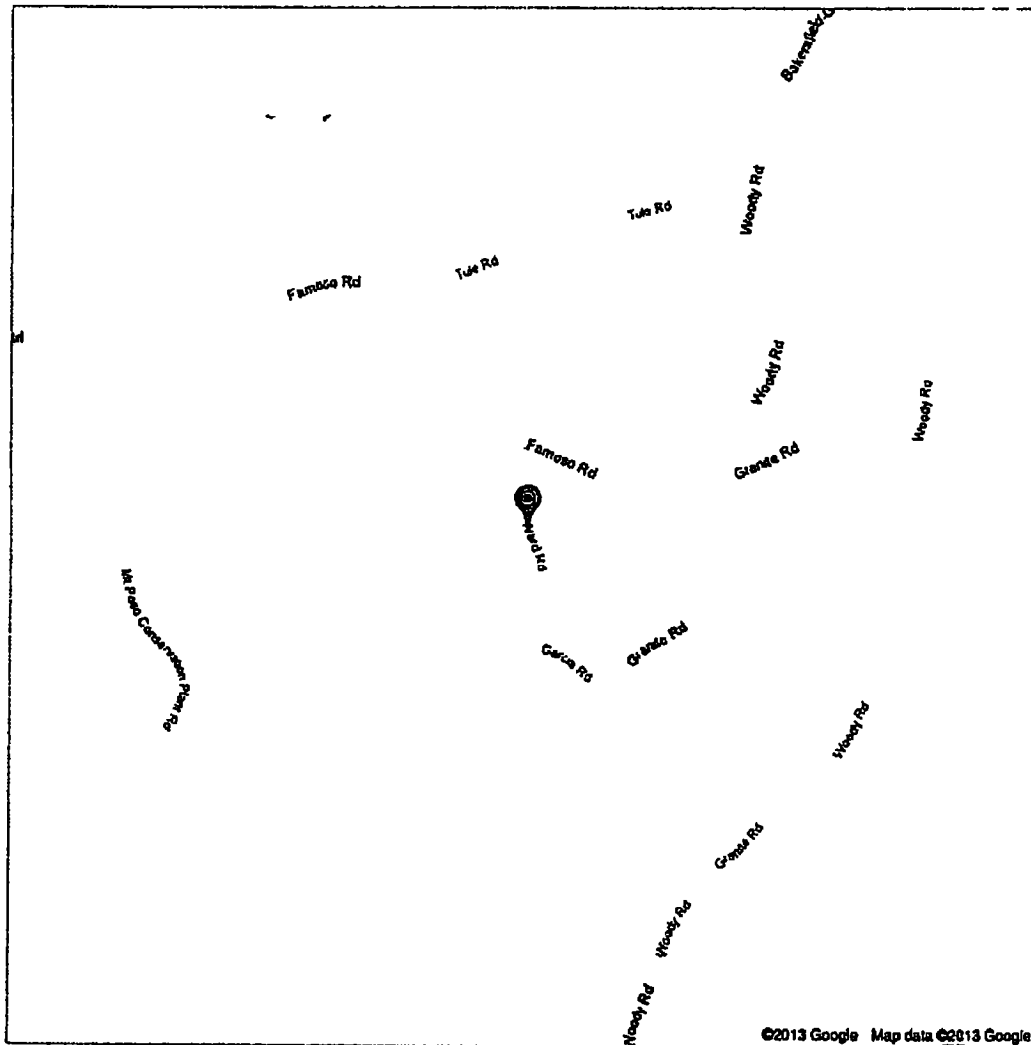
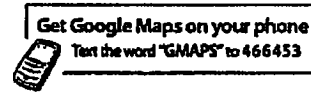
Annual Permit Fees			
Permit Number	Fee Schedule	Fee Description	Annual Fee
S-1326-437-0	3020-02-H (15.0 MMBtu/hr or greater)	15 MMBtu/hr	\$ 1030

Attachments

- I Project Location Map, Plot Plan, and Facility Photo
- II Emission Profiles
- III BACT Guideline
- IV BACT Analysis
- V HRA/AAQA
- VI Statewide Compliance Form
- VII Title V Compliance Certification Form
- VIII Draft ATC

ATTACHMENT I
Project Location Map, Plot Plan, and Facility Photo

Google



Mt Poso North Unit

Unlisted 0 views
Created on May 14 By Updated 3 minutes ago

 Mt Poso North Unit

Google

To see all the details that are visible on the screen use the Print link next to the map



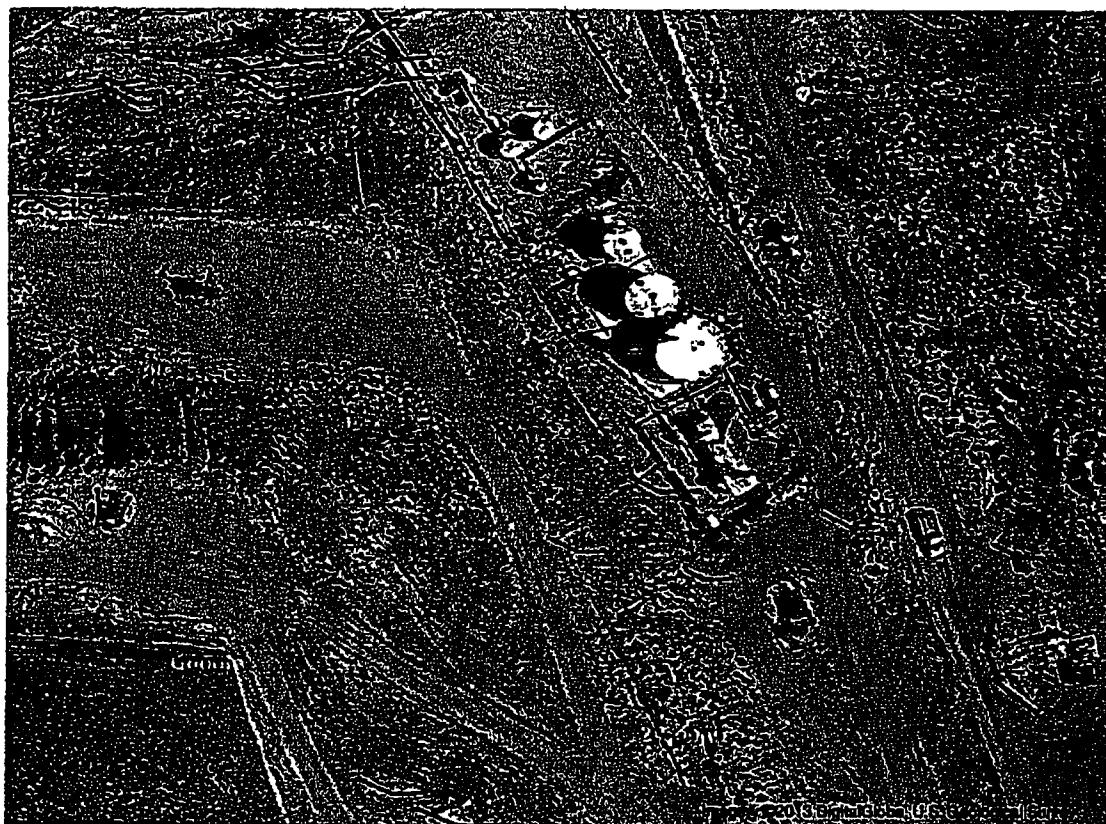
Untitled



Mt Poso North Unit

Google

To see all the details that are visible on the screen use the Print link next to the map



Untitled



Mt Poso North Unit



Google earth

Google Earth Pro

feet
meters

1000

400



ATTACHMENT II Emission Profiles

Permit # S 1326-437-0	Last Updated
Facility VINTAGE	12/06/2013 DAVIDSOS
PRODUCTION CALIFORNIA	

Equipment Pre Baselined NO

	<u>NOX</u>	<u>SOX</u>	<u>PM10</u>	<u>CO</u>	<u>VOC</u>
Potential to Emit (lb/Yr)	1445 0	374 0	394 0	4862 0	723 0
Daily Emis Limit (lb/Day)	4 0	1 0	1 1	13 3	2 0
Quarterly Net Emissions Change (lb/Qtr)					
Q1	361 0	94 0	99 0	1216 0	181 0
Q2	361 0	94 0	99 0	1216 0	181 0
Q3	361 0	94 0	99 0	1216 0	181 0
Q4	361 0	94 0	99 0	1216 0	181 0
Check if offsets are triggered but exemption applies	N	N	N	N	N
Offset Ratio	1 5		1 5		1 5
Quarterly Offset Amounts (lb/Qtr)					
Q1	542 0		148 0		271 0
Q2	542 0		148 0		271 0
Q3	542 0		148 0		271 0
Q4	542 0		148 0		271 0

ATTACHMENT III
BACT Guideline

Per » [B A C T » Bact Guideline.asp?category_Level1=1&category_Level2=8&category_Level3=4&last_Update=7 » 18](#)

[Back](#)

Best Available Control Technology (BACT) Guideline 1 8 4
Last Update 7/18/2006

Heater Treater < 20 MMBtu/hr, Natural Gas Fired

Pollutant	Achieved in Practice or in the SIP	Technologically Feasible	Alternate Basic Equipment
CO	150 ppmv @ 3% O2 (natural gas with LPG as back up fuel) and good combustion practices	1) 90% reduction with catalytic oxidation system 2) 111 ppmv @ 3% O2 natural gas with LPG as back up fuel and good combustion practices	
NOx	15 ppmv @ 3% O2 (0.029 lb/MMBtu) (low-NOx burner with flue gas recirculation or equal)	1) 9 ppmv @ 3% O2 (low temperature oxidation (LTO), selective catalytic reduction (SCR) or equal) 2) 12 ppmv @ 3% O2 ultra low NOx burner	
PM10	Natural gas with LPG as backup and good combustion practices		
SOx	PUC quality natural gas with LPG as backup and good combustion practices		

BACT is the most stringent control technique for the emissions unit and class of source. Control techniques that are not achieved in practice or contained in a state implementation plan must be cost effective as well as feasible. Economic analysis to demonstrate cost effectiveness is required for all determinations that are not achieved in practice or contained in an EPA approved State Implementation Plan.

This is a Summary Page for this Class of Source. For background information, see Permit Specific BACT Determinations on [Details Page](#).

ATTACHMENT IV BACT Analysis

BACT Analysis for NO_x Emissions

Step 1 - Identify All Possible Control Technologies

The District adopted District Rule 4320 on October 16, 2008. The NO_x emission limit requirements in District Rule 4320 are lower than the current BACT limits; therefore a project specific BACT analysis will be performed to determine BACT for this project. District Rule 4320 includes a compliance option that limits units greater than 5 MMBtu/hr and less than 20 MMBtu/hr to 9 ppm @ 3% O₂. This emission limit is Achieved in Practice control technology for the BACT analysis. District Rule 4320 also contains an enhanced schedule option that allows applicants additional time to meet the requirements of the rule. The enhanced schedule NO_x emission limit requirement is 6 ppmv @ 3% O₂. Since this is an enhanced option in the rule, it will be considered the Technologically Feasible control technology for the BACT analysis.

The following are possible control technologies:

1. 9 ppmvd @ 3% O₂ - Achieved in Practice
2. 6 ppmvd @ 3% O₂ with SCR – Technologically Feasible

Step 2 - Eliminate Technologically Infeasible Options

None of the above listed technologies are technologically infeasible.

Step 3 - Rank Remaining Control Technologies by Control Effectiveness

1. 9 ppmvd @ 3% O₂ - Achieved in Practice
2. 6 ppmvd @ 3% O₂ with SCR – Technologically Feasible

Step 4 - Cost Effectiveness Analysis

A cost effective analysis is required for technologically feasible control options that are not proposed. An installation cost of \$300,000 for a 10 MMBtu/hr process heater, and assumed also applicable for a 15 MMBtu/hr heater, were obtained for project S-3897 1131660 (final 7-1-13).

Annualized Capital Cost

Equivalent Annual Capital Cost (Capital Recovery)

$$A = P \frac{i(1+i)^n}{(1+i)^n - 1} \quad \text{where,}$$

A = Equivalent Annual Control Equipment Capital Cost

P = Present value of the control equipment, including installation cost

i = interest rate (use 10%, or demonstrate why alternate is more representative of the specific operation)

n = equipment life (assume 10 years or demonstrate why alternate is more representative of the specific operation)

Where

$P = \$300,000$ (assuming the lower of range values is applicable for a
15 MMBtu/hr unit , conservative)

$i = 10\%$,

$n = 10$ years

$A = \$48,810/\text{yr}$

Industrial Standard NO_x Emissions = 15 MMBtu/hr x 0.018 lb/MMBtu x 8760 hrs/year
= 2,365 lb/year

Tech Feasible NO_x Emissions = 15 MMBtu/hr x 0.007 lb/MMBtu x 8760 hrs/year
= 920 lb/year

NO_x reduction due to SCR

Total reduction = Emissions_(15 ppmv) – Emissions_(6 ppmv)

Total reduction = (2365 lb/yr – 920 lb/yr)/2000 lb/ton

Total reduction = 0.7 ton/yr

Cost effectiveness

Cost effectiveness = $\$48,810/\text{yr} / 0.7 \text{ ton/yr}$

Cost effectiveness = $\$69,729/\text{ton NO}_x$

The cost effectiveness is greater than the \$24,500/ton NO_x cost effectiveness threshold of the District BACT policy. Therefore the use of SCR with ammonia injection is not cost effective and is not required as BACT for NO_x.

Step 5 - Select BACT

BACT is satisfied by the applicant's proposal to meet a NO_x limit of 9 ppmvd @ 3% O₂ to be achieved with a Low NO_x burner.

BACT Analysis for CO Emissions

a Step 1 - Identify all control technologies

The SJVUAPCD BACT Clearinghouse Guideline 1.8.5 has been rescinded for NO_x; however, Guideline 1.8.5 would still apply for CO. The following are possible control technologies:

- 1) Natural gas with LPG backup or Propane fired

b Step 2 - Eliminate technologically infeasible options

There are no technologically infeasible options to eliminate from step 1.

c Step 3 - Rank remaining options by control effectiveness

- 1) Natural gas with LPG backup or Propane fired

d Step 4 - Cost Effectiveness Analysis

There are no other technologically feasible control options, therefore, a cost effective analysis is not required

e Step 5 - Select BACT

BACT for CO emissions is a the unit being fired on natural gas

1 BACT Analysis for VOC Emissions

a Step 1 - Identify all control technologies

The SJVUAPCD BACT Clearinghouse Guideline 1 8 5 has been rescinded for NO_x however, Guideline 1 8 5 would still apply for VOC The following are possible control technologies

- 1) Natural gas with LPG backup or Propane fired

b Step 2 - Eliminate technologically infeasible options

There are no technologically infeasible options to eliminate from step 1

c Step 3 - Rank remaining options by control effectiveness

- 1) Natural gas with LPG backup or Propane fired

d Step 4 - Cost Effectiveness Analysis

There are no other technologically feasible control options, therefore, a cost effective analysis is not required

e Step 5 - Select BACT


BACT for PM10 and VOC emissions is a the unit being fired on natural gas

ATTACHMENT V
HRA/AAQA

San Joaquin Valley Air Pollution Control District Risk Management Review

To Steven Davidson AQE – Permit Services
From Joe Aguayo AQS – Technical Services
Date December 2, 2013
Facility Name Vintage Production CA LLC
Location SW/4 Sec 4, T27S, R28E
Application #(s) S-1326-437-0
Project # S-1134319

A RMR SUMMARY

RMR Summary			
Categories	15 MMBtu/hr NG-Fired Heater (Unit 437 0)	Project Totals	Facility Totals
Prioritization Score	0 0	<1 0	>1 0
Acute Hazard Index	0 00	0 00	0 02
Chronic Hazard Index	0 00	0 00	0 01
Maximum Individual Cancer Risk (10^{-6})	0 0	0 0	1 1
T BACT Required?	No		
Special Permit Conditions?	No		

Proposed Permit Conditions

To ensure that human health risks will not exceed District allowable levels the following permit conditions must be included for

Unit # 437-0

- 1 The exhaust stack shall vent vertically upward The vertical exhaust flow shall not be impeded by a rain cap (flapper ok) roof overhang or any other obstruction

B RMR REPORT

I Project Description

Technical Services received a request on November 14 2013 to perform an Ambient Air Quality Analysis and a Risk Management Review for a 15 MMBtu/hr natural gas-fired heater treater with two separate 7.5 MMBtu/hr Maxon XPO 5 EB ultra low NO_x burners (or equivalent)

II Analysis

Technical Services performed a prioritization using the District's HEARTs database. Since the total facility prioritization score was greater than one, a refined health risk assessment was required. Emissions calculated using emission factors for external combustion of natural gas were input into the HEARTs database. The AERMOD model was used with the parameters outlined below and meteorological data for 2005-2009 from Fresno to determine the dispersion factors (i.e., the predicted concentration or X divided by the normalized source strength or Q) for a receptor grid. These dispersion factors were input into the Hot Spots Analysis and Reporting Program (HARP) risk assessment module to calculate the chronic and acute hazard indices and the carcinogenic risk for the project.

The following parameters were used for the review:

Analysis Parameters Unit 437-0			
Source Type	Point	Location Type	Rural
Stack Height (m)	2.44	Closest Receptor (m)	1609
Stack Diameter (m)	0.81	Type of Receptor	Residential
Stack Exit Velocity (m/s)	6.41	Max Hours per Year	8760
Stack Exit Temp (°K)	394.26	Fuel Type	NG
Burner Rating (MMBtu/hr)	15		

Technical Services performed modeling for criteria pollutants CO, NO_x, SO_x, and PM₁₀ as well as a RMR. The emission rates used for criteria pollutant modeling were 0.55 lb/hr CO, 0.17 lb/hr NO_x, 0.04 lb/hr SO_x, and 0.05 lb/hr PM₁₀. The engineer supplied the maximum fuel rate for the NG-fired heater used during the analysis.

The results from the Criteria Pollutant Modeling are as follows:

Criteria Pollutant Modeling Results*

NG Fired Heater	1 Hour	3 Hours	8 Hours	24 Hours	Annual
CO	Pass ¹	X	Pass ¹	X	X
NO _x	Pass ¹	X	X	X	Pass ²
SO _x	Pass ¹	Pass	X	Pass ¹	Pass ²
PM ₁₀	X	X	X	Pass ²	Pass ²
PM _{2.5}	X	X	X	Pass ²	Pass ²

*Results were taken from the attached PSD spreadsheet.

¹The project was compared to the 1-hour NO₂ National Ambient Air Quality Standard that became effective on April 12, 2010 using the District's approved procedures.

²The criteria pollutants are below EPA's level of significance as found in 40 CFR Part 51.165(b)(2).

III Conclusion

The acute and chronic indices are below 1.0 and the cancer risk factor associated with the project is less than 1.0 in a million. In accordance with the District's Risk Management Policy, the project is approved without Toxic Best Available Control Technology (T-BACT).

To ensure that human health risks will not exceed District allowable levels, the permit conditions listed on page 1 of this report must be included for this proposed unit.

These conclusions are based on the data provided by the applicant and the project engineer
Therefore this analysis is valid only as long as the proposed data and parameters do not change

The emissions from the proposed equipment will not cause or contribute significantly to a violation
of the State and National AAQS

IV Attachments

- A RMR request from the project engineer
- B Additional information from the applicant/project engineer
- C Toxic emissions summary
- D Prioritization score
- E Facility Summary

ATTACHMENT VI
Statewide Compliance Statement

CERTIFICATION

OXY USA Inc hereby certifies as follows

- 1 OXY USA Inc owns or operates certain major stationary sources in the State of California. Such sources are comprised of a vast number of emission points. As used in this certification the term "major stationary source" shall, with respect to OXY USA Inc stationary sources in the SJVUAPCD, have the meaning ascribed thereto in SJVUAPCD Rule 2201, Section 3.23, and shall, with respect to all of OXY USA Inc's other stationary sources in the State of California, have the meaning ascribed thereto in section 302(J) of the Clean Air Act (42 U.S.C. Section 7602 (J)).
- 2 Subject to paragraphs 3 and 4 below, all major stationary sources owned or operated by OXY USA Inc in the State of California are either in compliance or on an approved schedule of compliance with all applicable emission limitations and standards under the Clean Air Act and all of the State Implementation Plan approved by the Environmental Protection Agency.
- 3 This certification is made on information and belief and is based upon a review of OXY USA Inc's major stationary sources in the State of California by those employees of OXY USA Inc who have operational responsibility for compliance. In conducting such reviews, OXY USA Inc and its employees have acted in good faith and have exercised best efforts to identify any exceedance of the emission limitations and standards referred to in paragraph 2 thereof.
- 4 This certification shall speak as of the time and date of its execution.

CERTIFICATION

By	<u>Denny Brown</u>	Date	<u>11/13/2013</u>
Title	<u>Operations Manager</u>	Time	<u>7 30 AM</u>

ATTACHMENT VII
Title V Compliance Certification Form

TITLE V MODIFICATION - COMPLIANCE CERTIFICATION FORM

COMPANY NAME Vintage Production California LLC		FACILITY ID S - 1326
1 Type of Organization <input checked="" type="checkbox"/> Corporation <input type="checkbox"/> Sole Ownership <input type="checkbox"/> Government <input type="checkbox"/> Partnership <input type="checkbox"/> Utility		
2. Owner's Name		
3 Agent to the Owner Jennifer Hart		

- ☒ Based on information and belief formed after reasonable inquiry the equipment identified in this application will continue to comply with the applicable federal requirement(s)
- ☒ Based on information and belief formed after reasonable inquiry the equipment identified in this application will comply with applicable federal requirement(s) that will become effective during the permit term, on a timely basis.
- ☒ Corrected information will be provided to the District when I become aware that incorrect or incomplete information has been submitted
- ☒ Based on information and belief formed after reasonable inquiry information and statements in the submitted application package including all accompanying reports, and required certifications are true accurate and complete

Denny Brown
Signature of Responsible Official

Date _____

Name of Responsible Official (please print)

Title of Responsible Official (please print)

Mailing Address Central Regional Office * 1990 E. Gettysburg Avenue * Fresno, California 93726-0244 * (559) 230-5900 * FAX (559) 230-6061

ATTACHMENT VIII
Draft ATC

San Joaquin Valley
Air Pollution Control District

AUTHORITY TO CONSTRUCT

PERMIT NO S-1326-437-0

LEGAL OWNER OR OPERATOR VINTAGE PRODUCTION CALIFORNIA LLC
MAILING ADDRESS 9600 MING AVE SUITE 300
BAKERSFIELD CA 93311

LOCATION HEAVY OIL CENTRAL STATIONARY SOURCE
KERN COUNTY CA

SECTION SW 4 **TOWNSHIP** 27S **RANGE** 28E

EQUIPMENT DESCRIPTION

15 MMBTU/HR NATURAL GAS FIRED HEATER TREATER WITH TWO SEPARATE 7.5 MMBTU/HR MAXON XPO 5 EB
ULTRA LOW NOX BURNERS (OR EQUIVALENT)

CONDITIONS

- 1 {1830} This Authority to Construct serves as a written certificate of conformity with the procedural requirements of 40 CFR 70.7 and 70.8 and with the compliance requirements of 40 CFR 70.6(c) [District Rule 2201] Federally Enforceable Through Title V Permit
- 2 {1831} Prior to operating with modifications authorized by this Authority to Construct, the facility shall submit an application to modify the Title V permit with an administrative amendment in accordance with District Rule 2520 Section 5.3.4 [District Rule 2520, 5.3.4] Federally Enforceable Through Title V Permit
- 3 Particulate matter emissions shall not exceed 0.1 grain/dscf at operating conditions, nor 0.1 grain/dscf calculated to 12% CO₂, nor 10 lb/hr [District Rules 4201, 4301, 5.1 and 5.2.3]
- 4 The permittee shall obtain written District approval for the use of any equivalent equipment not specifically approved by this Authority to Construct. Approval of the equivalent equipment shall be made only after the District's determination that the submitted design and performance of the proposed alternate equipment is equivalent to the specifically authorized equipment [District Rule 2201] Federally Enforceable Through Title V Permit
- 5 The permittee's request for approval of equivalent equipment shall include the make, model, manufacturer's maximum rating, manufacturer's guaranteed emission rates, equipment drawing(s) and operational characteristics/parameters [District Rule 2201] Federally Enforceable Through Title V Permit

CONDITIONS CONTINUE ON NEXT PAGE

YOU MUST NOTIFY THE DISTRICT COMPLIANCE DIVISION AT (661) 392-5500 WHEN CONSTRUCTION IS COMPLETED AND PRIOR TO OPERATING THE EQUIPMENT OR MODIFICATIONS AUTHORIZED BY THIS AUTHORITY TO CONSTRUCT. This is NOT a PERMIT TO OPERATE. Approval or denial of a PERMIT TO OPERATE will be made after an inspection to verify that the equipment has been constructed in accordance with the approved plans, specifications and conditions of this Authority to Construct and to determine if the equipment can be operated in compliance with all Rules and Regulations of the San Joaquin Valley Unified Air Pollution Control District. Unless construction has commenced pursuant to Rule 2050, this Authority to Construct shall expire and application shall be cancelled two years from the date of issuance. The applicant is responsible for complying with all laws, ordinances and regulations of all other governmental agencies which may pertain to the above equipment.

Sayed Sadredin, Executive Director, APCO

DAVID WARNER, Director of Permit Services

8-1326-437-0 Dec 12 2013 8:56AM EDGEHLR Joint Inspection NOT Req. Issued

Southern Regional Office • 34946 Flyover Court • Bakersfield, CA 93308 • (661) 392-5500 • Fax (661) 392-5585

- 6 Alternate equipment shall be of the same class and category of source as the equipment authorized by the Authority to Construct [District Rule 2201] Federally Enforceable Through Title V Permit
- 7 No emission factor and no emission shall be greater for the alternate equipment than for the proposed equipment. No changes in the hours of operation, operating rate, throughput, or firing rate may be authorized for any alternate equipment. [District Rule 2201] Federally Enforceable Through Title V Permit
- 8 The unit shall only be fired on gas with a maximum sulfur content of 1.0 gr S/100scf [District Rule 2201] Federally Enforceable Through Title V Permit
- 9 Emission rates shall not exceed NO_x (as NO_x) 9 ppmvd @ 3% O₂ or 0.011 lb-NO_x/MMBtu, PM₁₀ 0.003 lb/MMBtu, CO 50 ppmvd @ 3% O₂ or 0.037 lb-CO/MMBtu, or VOC 0.0055 lb/MMBtu [District Rule 2201, 4305, 4306, and 4320] Federally Enforceable Through Title V Permit
- 10 A source test to demonstrate compliance with NO_x, CO, and PM₁₀ emission limits shall be performed within 60 days of startup [District Rules 2201 and 4320] Federally Enforceable Through Title V Permit
- 11 Source testing to measure natural gas-combustion NO_x and CO emissions from this unit shall be conducted at least once every twelve (12) months (no more than 30 days before or after the required annual source test date). After demonstrating compliance on two (2) consecutive annual source tests, the unit shall be tested not less than once every thirty-six (36) months (no more than 30 days before or after the required 36-month source test date). If the result of the 36-month source test demonstrates that the unit does not meet the applicable emission limits, the source testing frequency shall revert to at least once every twelve (12) months [District Rules 2201, 4305, 4306 and 4320] Federally Enforceable Through Title V Permit
- 12 Source testing shall be conducted using the methods and procedures approved by the District. The District must be notified at least 30 days prior to any compliance source test, and a source test plan must be submitted for approval at least 15 days prior to testing [District Rule 1081] Federally Enforceable Through Title V Permit
- 13 For emissions source testing, the arithmetic average of three 30-consecutive-minute test runs shall apply. If two of three runs are above an applicable limit, the test cannot be used to demonstrate compliance with an applicable limit [District Rules 2201, 4305, 4306 and 4320] Federally Enforceable Through Title V Permit
- 14 The following test methods shall be used: PM₁₀ (lb/MMBtu) - EPA 201A - 202 or Method 5, NO_x (ppmv) - EPA Method 7E or ARB Method 100, NO_x (lb/MMBtu) - EPA Method 19, CO (ppmv) - EPA Method 10 or ARB Method 100, Stack gas oxygen (O₂) - EPA Method 3 or 3A or ARB Method 100, stack gas velocities - EPA Method 2, Stack gas moisture content - EPA Method 4, SO_x - EPA Method 6C or 8 or ARB Method 100, fuel gas sulfur as H₂S content - EPA Method 11 or 15, and fuel hhv (MMBtu) - ASTM D 1826 or D 1945 in conjunction with ASTM D 3588 [District Rule 2201, 4305, 4306, 4320] Federally Enforceable Through Title V Permit
- 15 The source test plan shall identify which basis (ppmv or lb/MMBtu) will be used to demonstrate compliance [District Rules 4305, 4306 and 4320] Federally Enforceable Through Title V Permit
- 16 The results of each source test shall be submitted to the District within 60 days thereafter [District Rule 1081] Federally Enforceable Through Title V Permit
- 17 The permittee shall monitor and record the stack concentration of NO_x, CO, and O₂ at least once every month (in which a source test is not performed) using a portable analyzer that meets District specifications. Monitoring shall not be required if the unit is not in operation, i.e. the unit need not be started solely to perform monitoring. Monitoring shall be performed within 5 days of restarting the unit unless monitoring has been performed within the last month [District Rules 4305, 4306, and 4320] Federally Enforceable Through Title V Permit

DRAFT
CONDITIONS CONTINUE ON NEXT PAGE

- 18 If the NO_x or CO concentrations corrected to 3%, as measured by the portable analyzer, exceed the applicable emission limit, the permittee shall return the emissions to within the acceptable range as soon as possible, but no longer than 1 hour of operation after detection. If the portable analyzer readings continue to exceed the allowable emissions concentration after 1 hour of operation after detection, the permittee shall notify the District within the following 1 hour and conduct a certified source test within 60 days of the first exceedance. In lieu of conducting a source test, the permittee may stipulate a violation has occurred, subject to enforcement action. The permittee must then correct the violation, show compliance has been re-established, and resume monitoring procedures. If the deviations are the result of a qualifying breakdown condition pursuant to Rule 1100, the permittee may fully comply with Rule 1100 in lieu of performing the notification and testing required by this condition. [District Rules 4102, 4305, 4306 and 4320] Federally Enforceable Through Title V Permit
- 19 All alternate monitoring parameter emission readings shall be taken with the unit operating either at conditions representative of normal operations or conditions specified in the Permit to Operate. The analyzer shall be calibrated, maintained, and operated in accordance with the manufacturer's specifications and recommendations or a protocol approved by the APCO. Emission readings taken shall be averaged over a 15 consecutive minute period by either taking a cumulative 15 consecutive minute sample reading or by taking at least five (5) readings, evenly spaced out over the 15 consecutive-minute period. [District Rules 4305, 4306, and 4320] Federally Enforceable Through Title V Permit
- 20 The permittee shall maintain records of (1) the date and time of NO_x, CO and O₂ measurements, (2) the O₂ concentration in percent by volume and the measured NO_x and CO concentrations corrected to 3% O₂, (3) make and model of exhaust gas analyzer, (4) exhaust gas analyzer calibration records and (5) a description of any corrective action taken to maintain the emissions within the acceptable range. [District Rules 4305, 4306 and 4320] Federally Enforceable Through Title V Permit
- 21 All emissions measurements shall be made with the unit operating either at conditions representative of normal operations or conditions specified in the Permit to Operate. Unless otherwise specified in the PTO no determination of compliance shall be established within two hours after a continuous period in which fuel flow to the unit is shut off for 30 minutes or longer, or within 30 minutes after a re-ignition as defined in Section 3.0 of District Rule 4320. For the purposes of permittee-performed alternate monitoring, emissions measurements may be performed at any time after the unit reaches conditions representative of normal operation. [District Rules 4305, 4306 and 4320] Federally Enforceable Through Title V Permit
- 22 Permittee shall determine sulfur content of combusted gas annually or shall demonstrate that the combusted gas is provided from a PUC or FERC regulated source. [District Rules 1081 and 4320] Federally Enforceable Through Title V Permit
- 23 Permittee shall maintain accurate records of valid purchase contracts, supplier certifications, tariff sheets, or transportation contracts used to satisfy the fuel sulfur content analysis of fuel combusted in process heater, provided they establish the fuel sulfur concentration and higher heating value. [District Rule 2201 and 4320] Federally Enforceable Through Title V Permit
- 24 All records shall be maintained and retained on-site for a minimum of five (5) years, and shall be made available for District inspection upon request. [District Rules 1070, 4305, 4306, and 4320] Federally Enforceable Through Title V Permit
- 25 Prior to operating equipment under this Authority to Construct, permittee shall surrender emission reduction credits for the following quantities of emissions: NO_x 542 lb/quarter, PM₁₀ 148 lb/quarter, and VOC 271 lb/qtr. Offsets include the applicable offset ratio specified in Section 4.8 of Rule 2201 (as amended 4/21/11). [District Rule 2201] Federally Enforceable Through Title V Permit
- 26 ERC Certificate Numbers C-809-4, N-1148.2, and S-3777.1 (or certificates split from these certificates) shall be used to supply the required offsets, unless a revised offsetting proposal is received and approved by the District, upon which this Authority to Construct shall be reissued, administratively specifying the new offsetting proposal. Original public noticing requirements, if any, shall be duplicated prior to reissuance of this Authority to Construct. [District Rule 2201] Federally Enforceable Through Title V Permit

DRAFT