

Update on District Grant EJ Map & CalEnviroScreen



HEALTHY AIR LIVING™

Live a Healthy Air Life!

EJ in District Grant Programs

- Goal: Pursue incentive programs that maximize benefits to EJ communities
- EJAG has provided input into enhancing grant programs
- Different ways to assess benefit:
 - *Geographically identify projects that provide air quality benefits to EJ communities*
 - Program design to increase penetration and benefit in EJ communities



EJ Mapping (for Grants)

- District developed map to track EJ grant funding
 - Based on minority/income levels & air quality
 - >50% minority and >10% below federal poverty level
- Additional methodologies have been developed to examine relative vulnerabilities of communities
 - “Vulnerability Action Zones” (UC Davis, 2011)
 - CalEnviroScreen (OEHHA, April 2013)
- Maps useful for identifying communities for increased investment (care needed to avoid “redlining” communities)



CalEnviroScreen Tool

- Cal/EPA has developed “CalEnviroScreen” tool as part of environmental justice strategy
- Goals of new tool:
 - Identify portions of the state with higher vulnerabilities and burdens as compared to other areas
 - Help identify areas most in need of resources and assistance
 - Not intended to create additional legal obligations for projects



HEALTHY AIR LIVING™

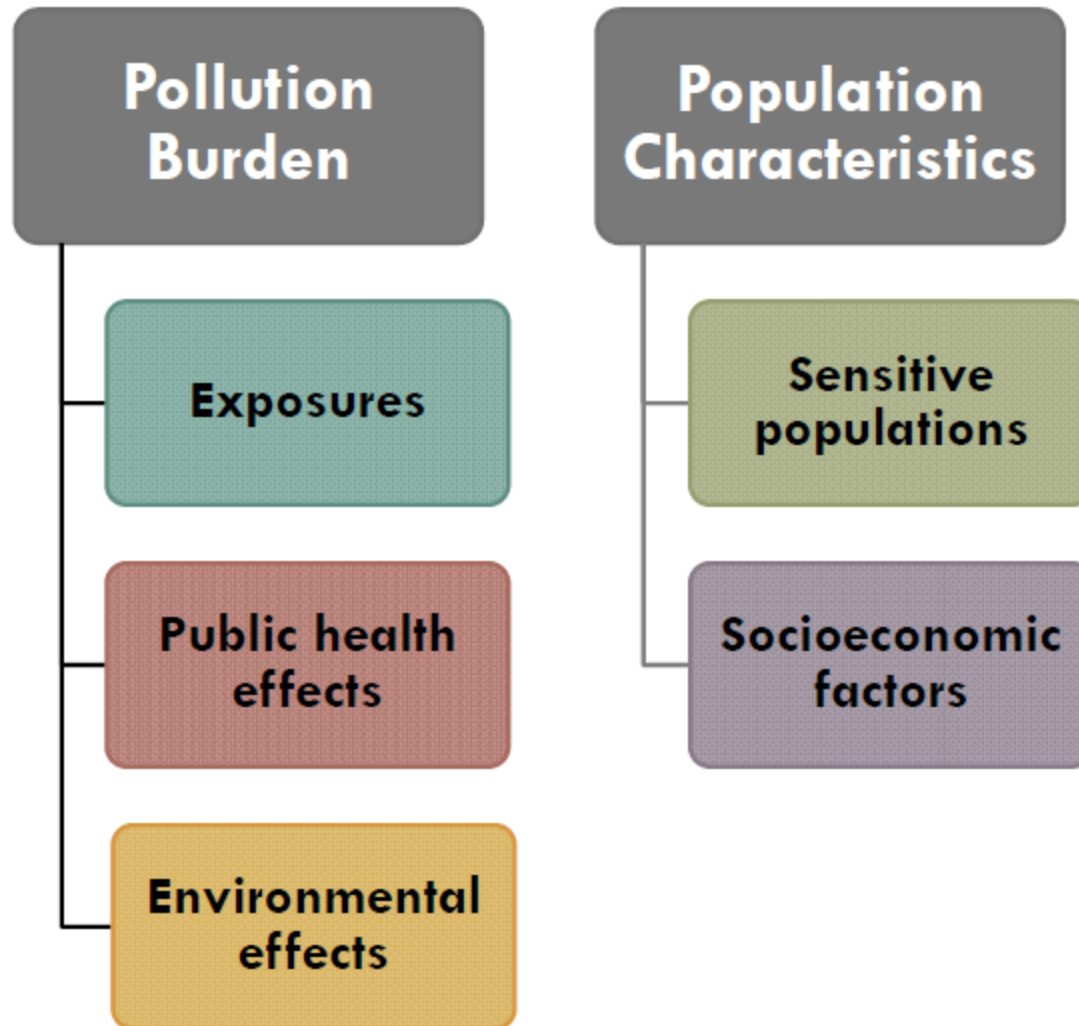
Live a Healthy Air Life!

CalEnviroScreen Methodology

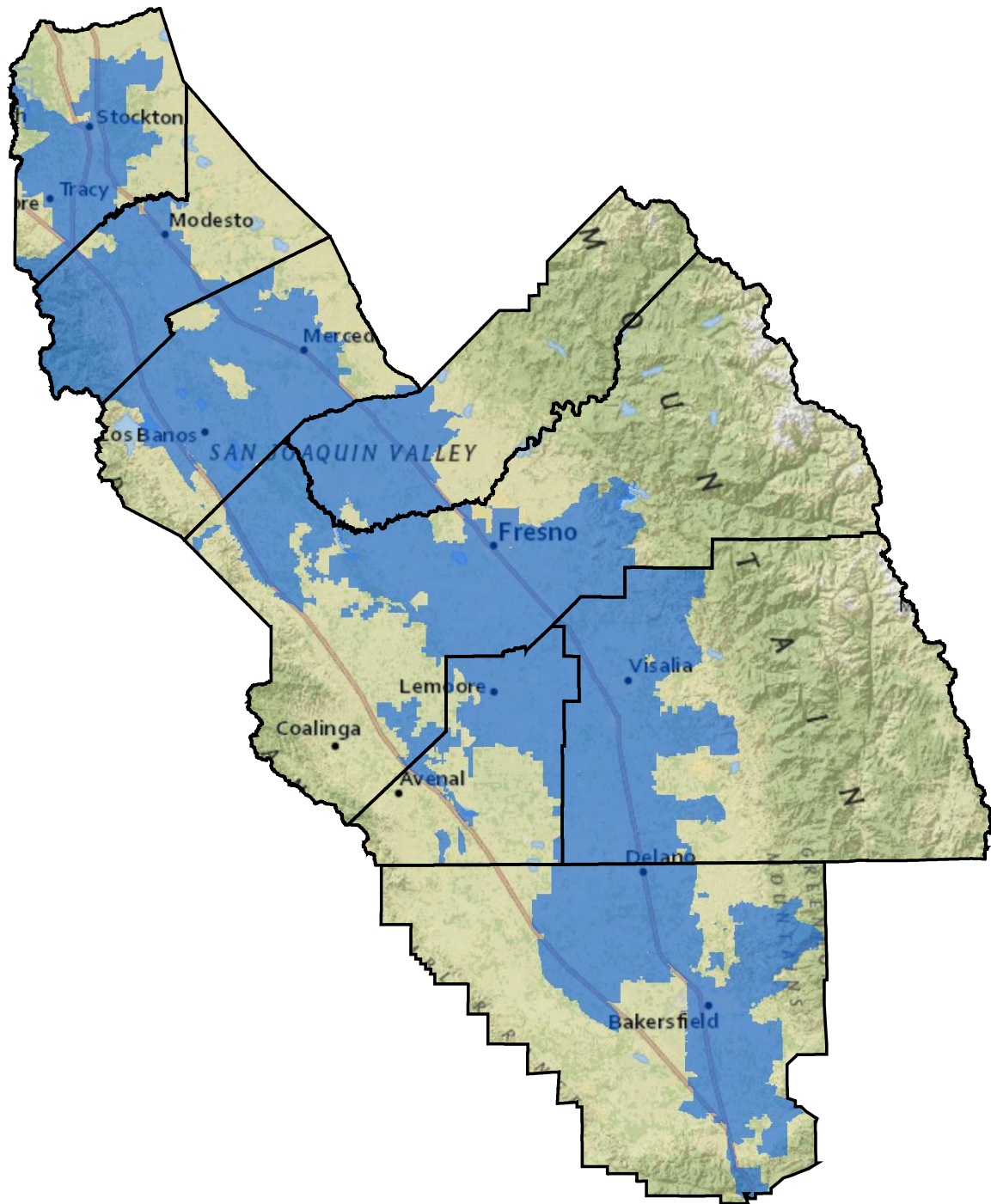
- CalEnviroScreen uses environmental, health, demographic, and socioeconomic data to create score for communities
- Communities with higher scores would be expected to experience greater pollution-related impacts
- Presents relative picture of the impact that communities face from various burdens and vulnerabilities (stressors)



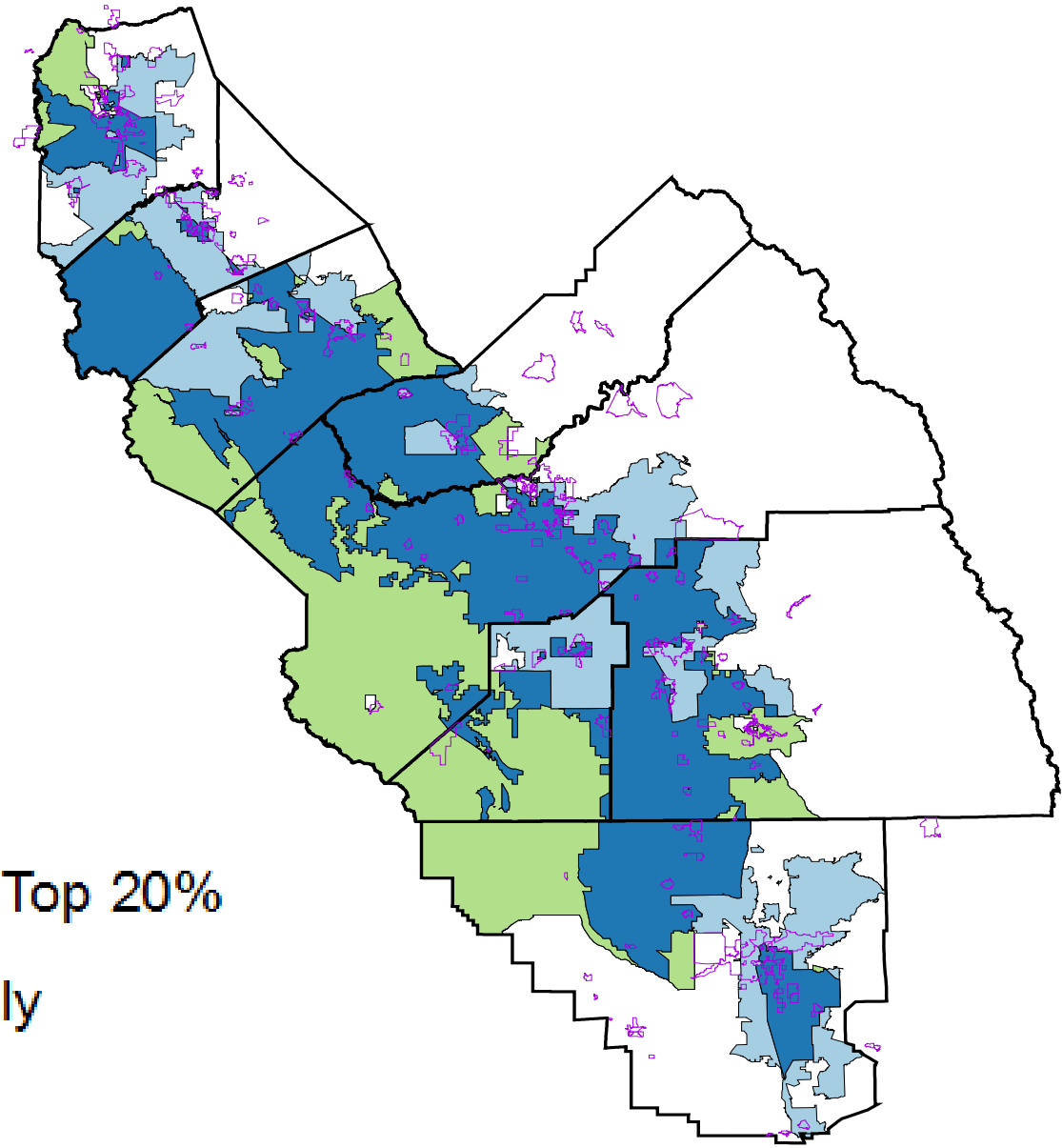
Primary Scoring Components







Top 20% CalEnviroScreen Vulnerability Score



Top 20% of CalEnviroScreen Compared to SJV EJ Grant



-  SJV EJ Only
-  SJV EJ and CES Top 20%
-  CES Top 20% Only
-  Populated Places

Preliminary Findings and Next Steps

- SJV Grant EJ Map
 - 52% of Valley population
- CalEnviroScreen Top 20%
 - 74% of Valley population
- While largely overlap, some communities in CalEnviroScreen not included in District map
 - Examples: Gustine, Hughson, Chowchilla
- Some potential next steps:
 - Review areas with high CalEnviroScreen score for potential inclusion in District EJ grant efforts
 - Continue identifying new funding – Cap & Trade